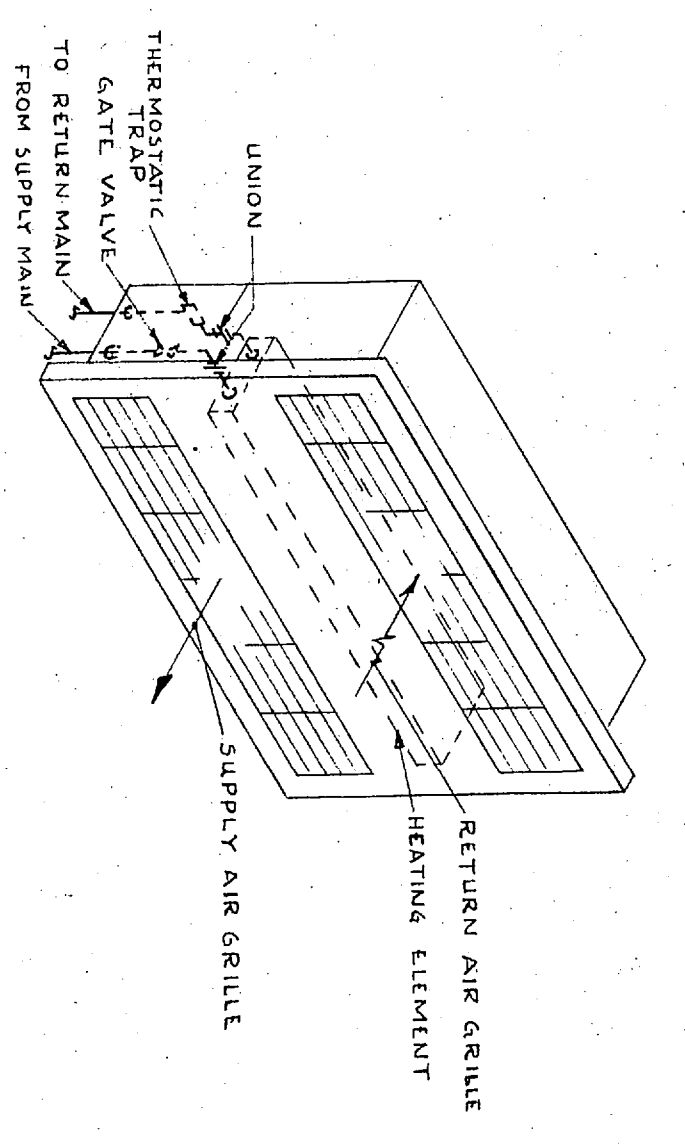


MY NO.	LOCATION	CAPACITY	
		E.D.R.	BS/HOUR
1	H&V. NO.1	2190	546
2	" " " " 1	730	182
3	" " " " 2	2190	546
4	" " " " 3	730	182
5	" " " " 4	2190	546
6	" " " " 5	730	182
7	" " " " 6	2190	546
8	" " " " 7	730	182
9	SWIMMING POOL HEAT EXCH.	7300	1875
10	" " " " " " " "	2500	625
11	H.W. GENERATOR. NO. 1	1670	556
12	" " " " " " " "	1670	556
13	" " " " " " " "	1670	556
14	" " " " " " " "	1670	556
15	" " " " " " " "	1670	556
16	" " " " " " " "	1670	556
17	AUDIT UNIT VENT NO. 5	1830	460
18	" " " " " " " "	1830	460
19	" " " " " " " "	1830	460
20	" " " " " " " "	1830	460
21	" " " " " " " "	1830	460
22	" " " " " " " "	1830	460
23	" " " " " " " "	1830	460
24	" " " " " " " "	1830	460
25	" " " " " " " "	1830	460
26	" " " " " " " "	1830	460
27	" " " " " " " "	1830	460
28	" " " " " " " "	1830	460
29	" " " " " " " "	1830	460
30	" " " " " " " "	1830	460
31	" " " " " " " "	1830	460
32	" " " " " " " "	1830	460
33	" " " " " " " "	1830	460
34	" " " " " " " "	1830	460

NOTE - RETURN TRAPS REFERRED TO AS 1, 2 AND 3 IN THE HEATING SCHEDULES. SMALL SET OF THE FOLLOWING MANUFACTURERS' ITEMS:

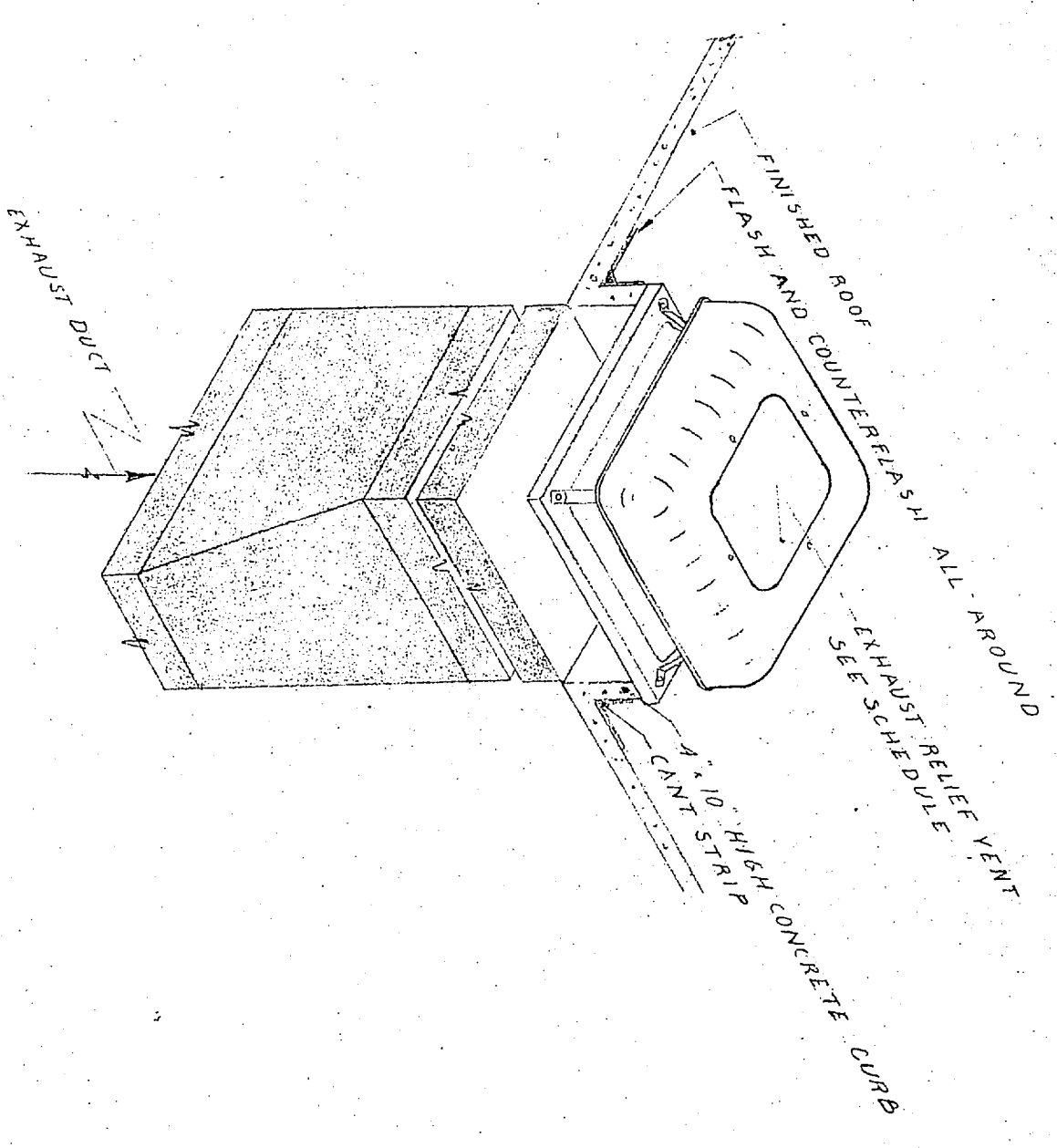
RETURN TRAP	SCHEDULE	NO. 1	NO. 2	NO. 3
MANUFACTURER		G-1	B-3	D-4
TRAP		17-C	B-C	7-C
WEBSTER		702-H	713-H	724-H
SARGO		1/2 H	3/4 H	1 H

P. NO.	WASTE OR VENT	HOT	COLD
1	WATER CLOSET	1/2"	1/2"
2	URINAL	1/2"	1/2"
3	LAVATORY	1/2"	1/2"
4	LAVATORY	1/2"	1/2"
5	SINK	1/2"	1/2"
6	GANG SHOWERS	1/2"	1/2"
7	STALL SHOWERS	1/2"	1/2"
8	D.F. (SINGLE)	1/2"	1/2"
9	D.F. (DOUBLE)	1/2"	1/2"
10	COMB. D.F. & CUPBOARD	1/2"	1/2"
11	LAUNDRY TUB	1/2"	1/2"
12	BOILER RAN SINK	1/2"	1/2"
13	UTILITY SINK	1/2"	1/2"
14	MIXING FAUCETS	1/2"	1/2"
15	AUTO. WASHER	1/2"	1/2"
16	ICE MACHINE	1/2"	1/2"



ASSEMBLY FOR HEATING UNIT NOS. 58 & 59
NOT TO SCALE

NO.	LOCATION	MFG. NO.	ARRANGEMENT	E.D.R.	PIPE SIZE	MOTOR	REMARKS
58	ENTRANCE	ABC. 431	W-4	119	1 1/2"	1/20-120	6 3/4" RECESS
59	ENTRANCE	ABC. 431	W-4	119	1 1/2"	1/20-120	6 3/4" RECESS



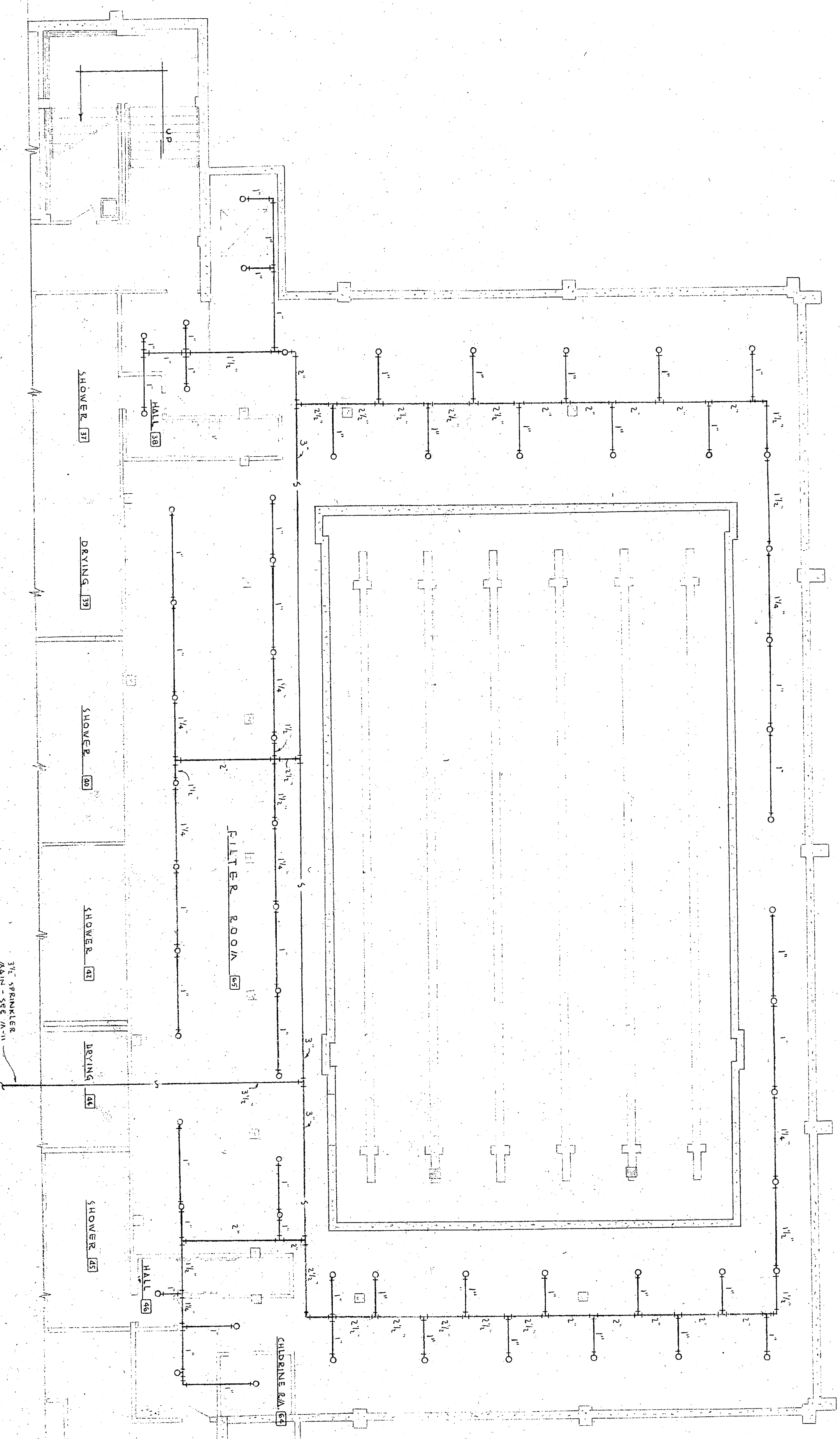
ASSEMBLY FOR EXHAUST RELIEF VENT
NOT TO SCALE

RV NO.	MANUFACTURER	SIZE	MAX. CFM	S.P. @ FT. 1	THROAT
1	ILG	ARV 243	2520	1/6"	3.24
2	ILG	ARV 183	1430	1/6"	2.02
3	ILG	ARV 83	278	1/6"	3.97

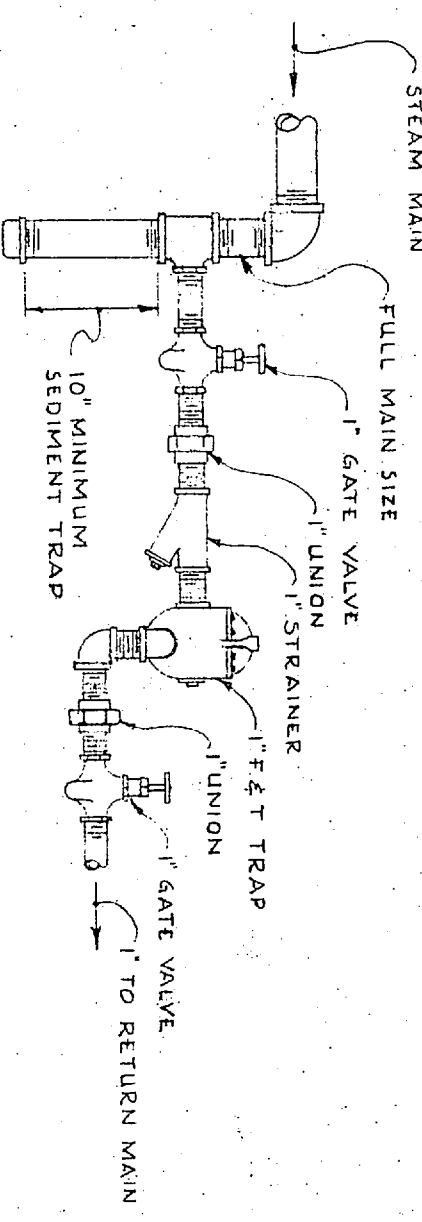
SCHEDULE OF RELIEF VENTS

SQUARE FEET OF DIRECT RADIATION	SUPPLY		RETURN	
	MANUAL VALVE INCHES	PIPE TO RADIATOR INCHES	HORIZONTAL RADIATOR OR SPRING PIECE INCHES	TRAP SIZE OF TRAP INCHES
1 - 25	1/2"	3/4"	1/2"	1/2"
26 - 50	3/4"	1"	1/2"	1/2"
51 - 100	1"	1 1/4"	1/2"	1/2"
101 - 140	1 1/4"	1 1/2"	1/2"	1/2"
141 - 180	1 1/2"	1 3/4"	1/2"	1/2"
181 - 300	1 3/4"	2"	1/2"	1/2"
301 - 450	2"	2 1/2"	1/2"	1/2"
451 - 700	2 1/2"	3"	1/2"	1/2"

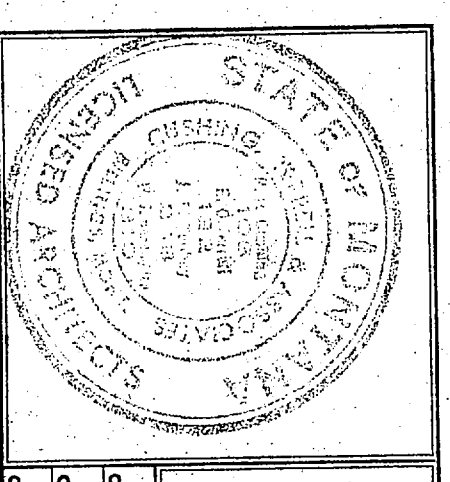
SWIMMING POOL GROUND FLOOR SPRINKLER PLAN



SCALE 1/4" = 1'-0"



ASSEMBLY FOR DRIPPING END OF STEAM MAIN
NOT TO SCALE



R. L. PRUSSING - MECHANICAL ENGINEER - BILLING
PHYSICAL EDUCATION BUILDING
EASTERN MONTANA COLLEGE
BILLINGS, MONTANA
Cushing, Terrell and Associates
Architects and Engineers
Billings, Montana