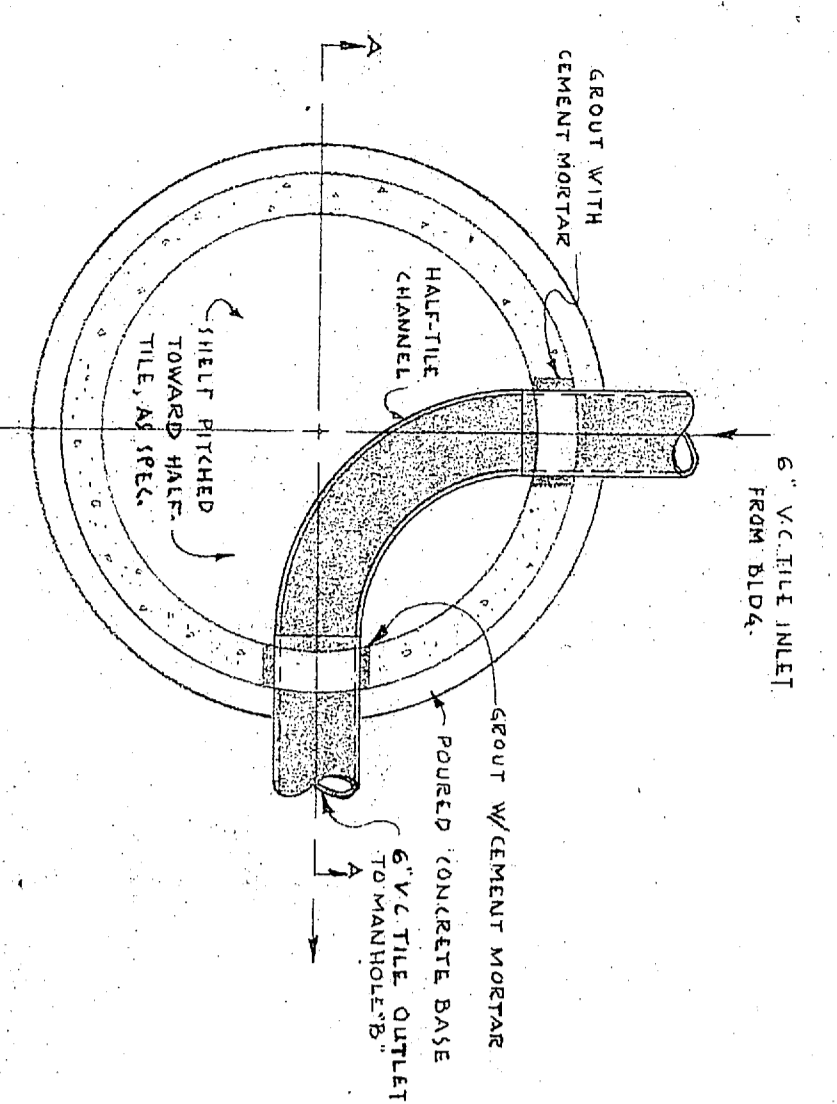
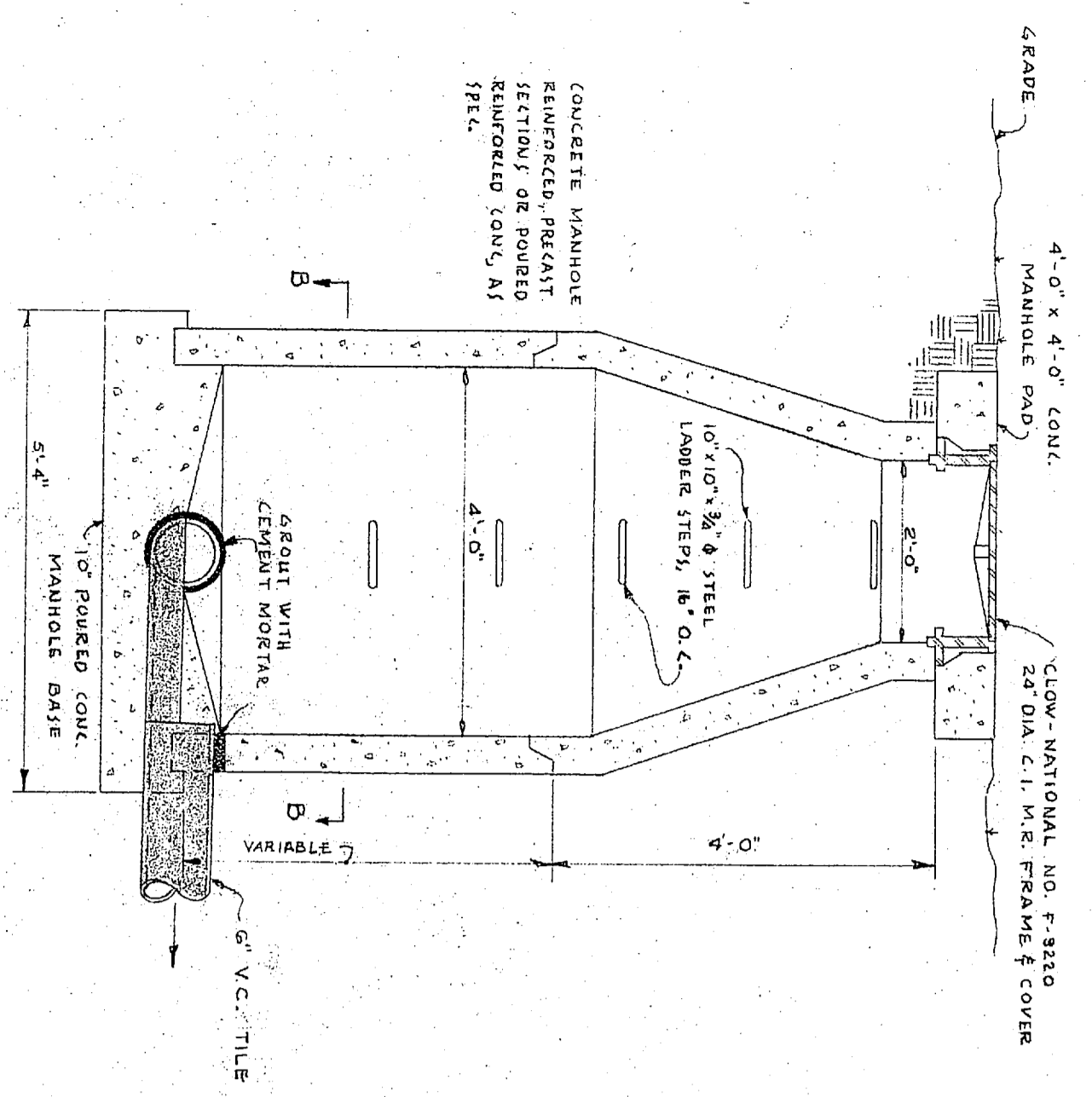


DETAIL EXIST MANHOLE 'C'

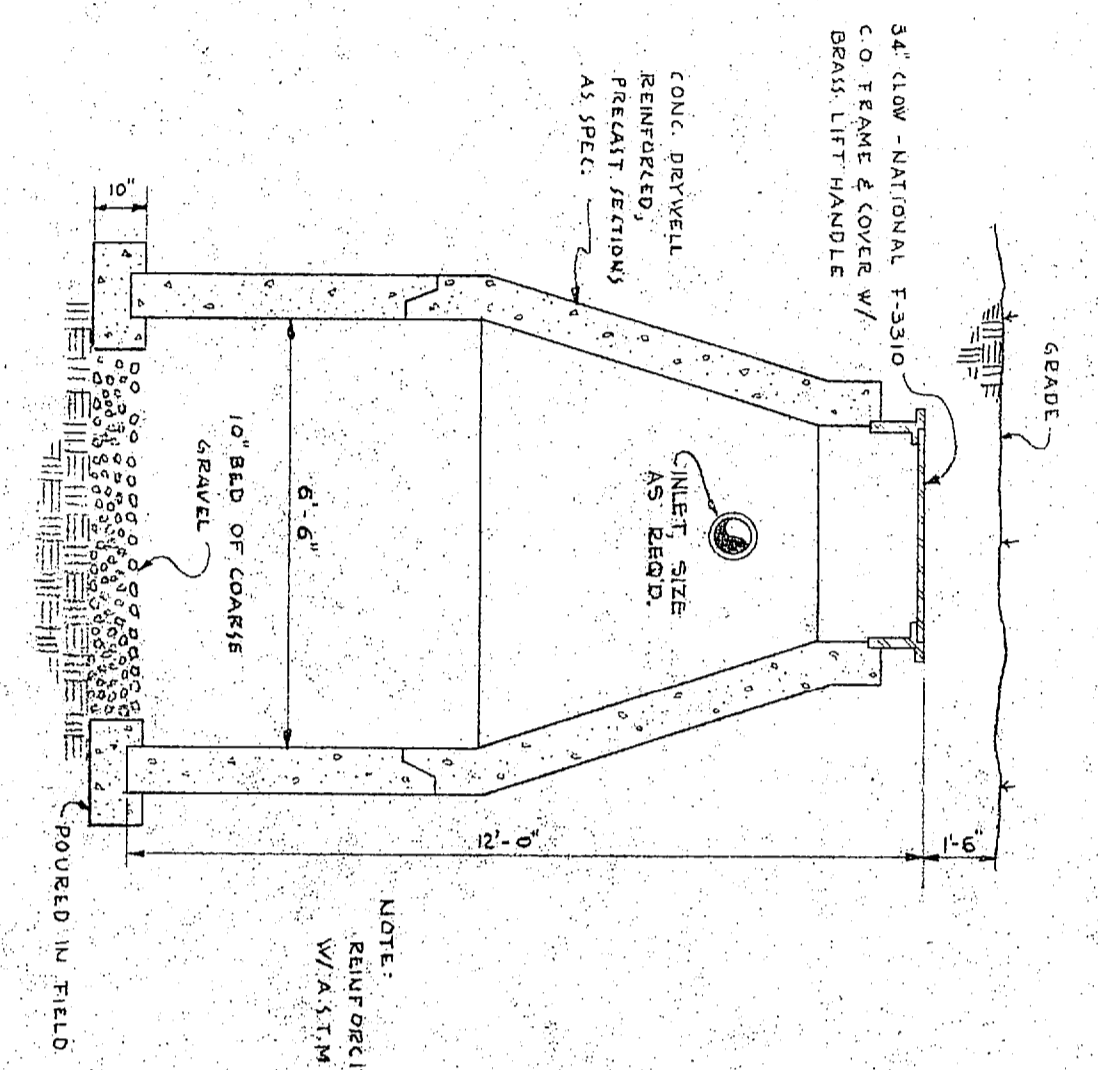


SECTION B-B

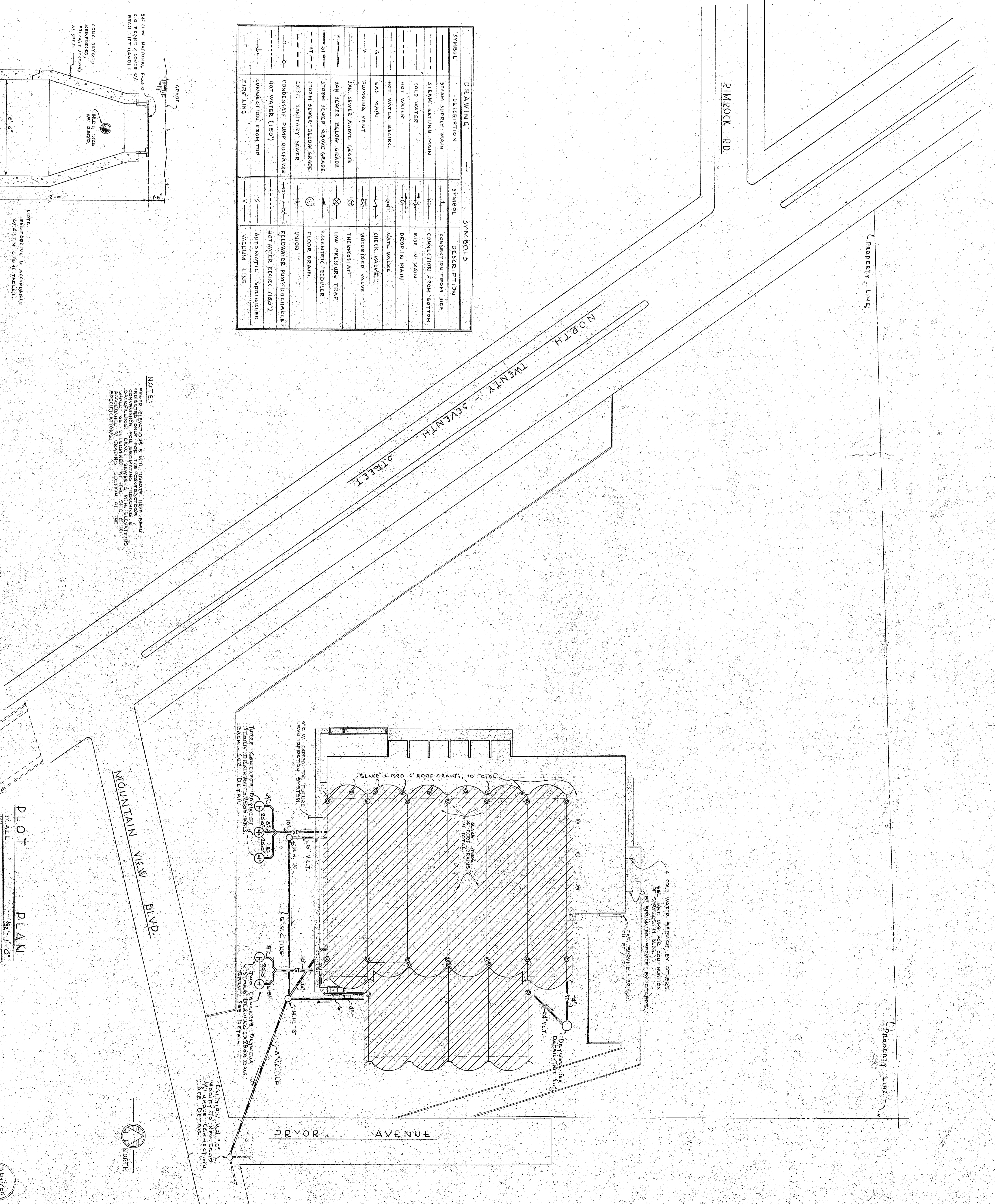


SECTION A-A
DETAIL - MANHOLE 'A'

DRAWING		SYMBOLS	
SYMBOL	DESCRIPTION	SYMBOL	DESCRIPTION
—	STEAM SUPPLY MAIN	—	CONNECTION FROM SIDE
—	STEAM RETURN MAIN	—	RISE IN MAIN
—	COLD WATER	—	DROP IN MAIN
—	HOT WATER	—	GATE VALVE
—	HOT WATER ELICIT.	—	CHECK VALVE
—	GAS MAIN	—	MOTORIZED VALVE
—	PUMPING VENT	—	THERMOSTAT
—	JAIL SEWER ABOVE GRADE	—	LOW PRESSURE TRAP
—	JAIL SEWER BELOW GRADE	—	ELECTRIC REDUCER
—	STORM SEWER ABOVE GRADE	—	FLOOR DRAIN
—	STORM SEWER BELOW GRADE	—	UNION
—	EXIST. SANITARY SEWER	—	FLOWMETER PUMP DISCHARGE
—	CONDENSATE PUMP DISCHARGE	—	HOT WATER ELICIT. (100°)
—	HOT WATER (100°)	—	AUTOMATIC SPRINKLER
—	CONNECTION FROM TOP	—	VACUUM LINE
—	STAIR LINE		

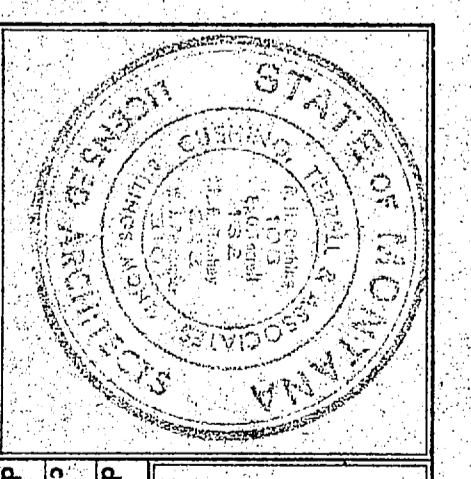


DRYWELL DETAIL



PLAN
SCALE 1/4" = 1'-0"

NOTE:
SHOWER ELEVATIONS AS SHOWN IN THESE PLANS HAVE BEEN INDICATED ONLY FOR THE CONTRACTORS AND ARCHITECTS TO USE IN THE CONSTRUCTION OF THE BUILDING. EXACT SHOWER ELEVATIONS SHALL BE DETERMINED BY THE CONTRACTOR IN ACCORDANCE WITH THE SPECIFICATIONS OF THE ARCHITECT.



R. L. FRUESSING—MECHANICAL ENGINEER—LICENSE MONTANA
 PHYSICAL EDUCATION BUILDING
 EASTERN MONTANA COLLEGE OF EDUCATION
 BILLINGS, MONTANA
 Cushing, Terrill and Associated Architects
 BILLINGS, MONTANA
 DATE: 10/1/50