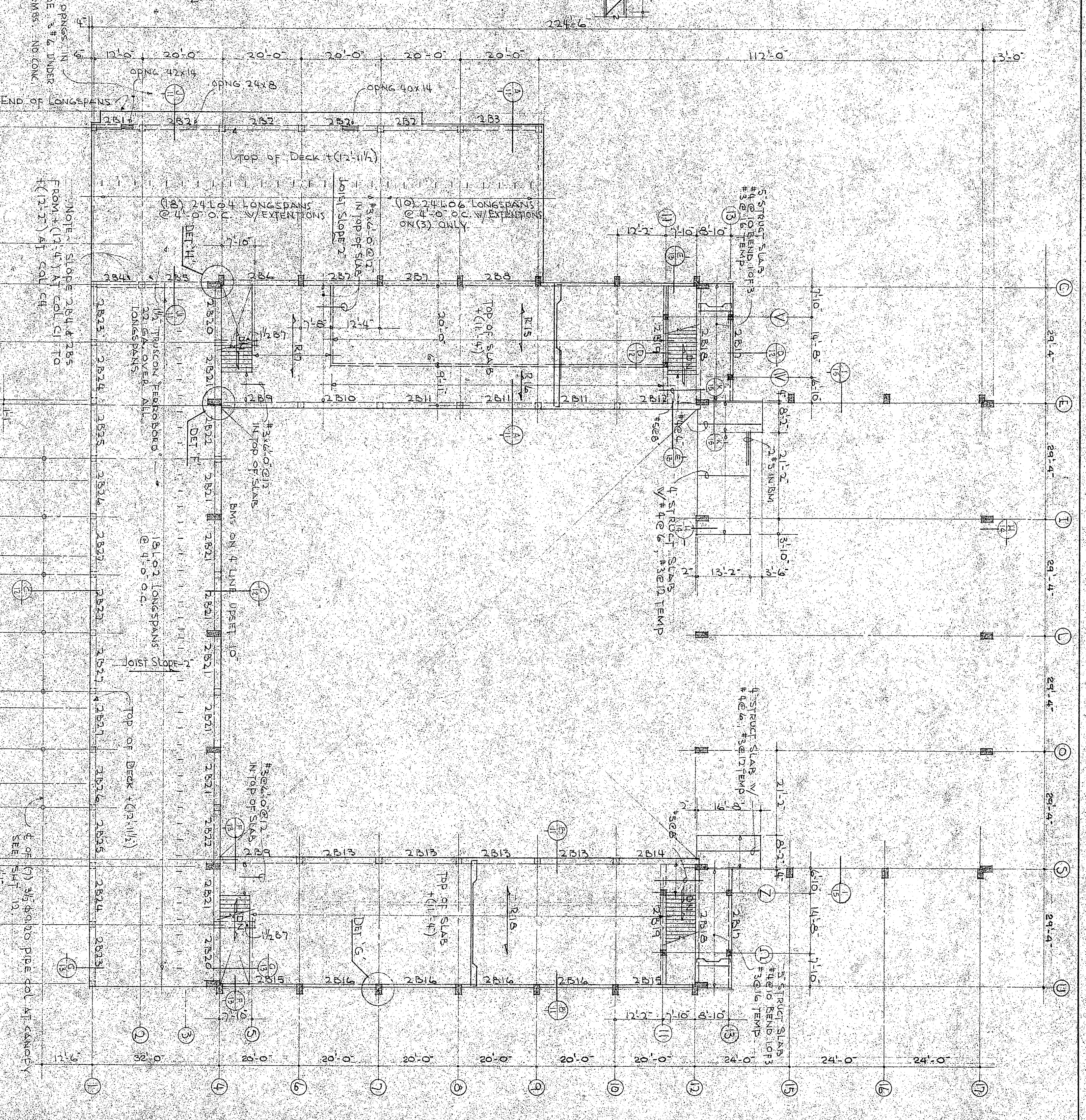
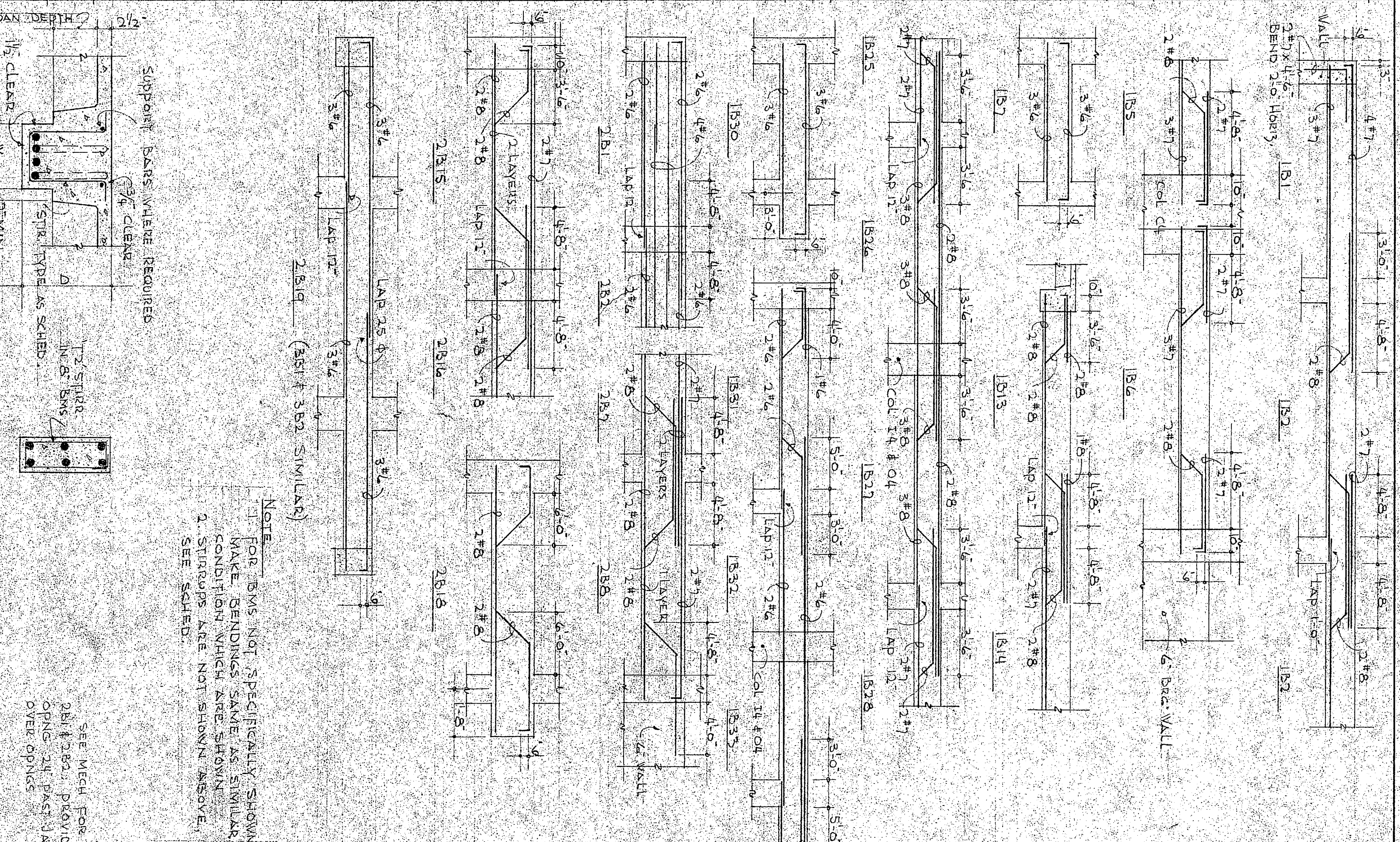


MARK	SIZE	W	D	NO. STRIPS	REINFORCING	STRIPS ENLARGED END	NO. STRIPS ENLARGED END	NO. STRIPS ENLARGED END	NO. STRIPS ENLARGED END
2 B 1	12	14	22	2	TOP STR.	3	3	3	3
2 B 2	12	14	22	2	TOP STR.	3	3	3	3
2 B 3	12	14	22	2	TOP STR.	3	3	3	3
2 B 4	12	14	22	2	TOP STR.	3	3	3	3
2 B 5	12	14	22	2	TOP STR.	3	3	3	3
2 B 6	12	14	22	2	TOP STR.	3	3	3	3
2 B 7	12	14	22	2	TOP STR.	3	3	3	3
2 B 8	12	14	22	2	TOP STR.	3	3	3	3
2 B 9	12	14	22	2	TOP STR.	3	3	3	3
2 B 10	12	14	22	2	TOP STR.	3	3	3	3
2 B 11	12	14	22	2	TOP STR.	3	3	3	3
2 B 12	12	14	22	2	TOP STR.	3	3	3	3
2 B 13	12	14	22	2	TOP STR.	3	3	3	3
2 B 14	12	14	22	2	TOP STR.	3	3	3	3
2 B 15	12	14	22	2	TOP STR.	3	3	3	3
2 B 16	12	14	22	2	TOP STR.	3	3	3	3
2 B 17	12	14	22	2	TOP STR.	3	3	3	3



2ND FLOOR DRAWING PLAN

GENERAL NOTES - (STEEL JOIST & STEEL DECK)

- STEEL JOIST & DECK, INSTALLATION SHALL BE IN ACCORDANCE WITH STEEL INSTITUTE STEEL MEMBER JOIST WILL ALSO BE DESIGNATED.
- BROUING SHALL BE CROSS-TYPE, W/ RIGID ANGLE, W/ 180° PLATE.
- AND, JOIST TO PROVISIONARY OR CONC. W/ 1/4" x 1/4" x 1/4" PER BEAM, R. P. AND WELD STEEL DECK TO STEEL THRU BOTTOM OF JOIST AT EVERY JOIST DECK BENDING POINT.
- DECK OTHER THAN THAT SHOWN SHALL HAVE EQUAL PROPERTIES AND FINISH. NOTE: MILLION PER AT CANOPY, PROGRESSIVE.
- SUPPORT STEEL AT CANOPIES SHALL HAVE 10 SHORTEST, AND OXIDE.

**PHYSICAL EDUCATION BUILDING**  
EASTERN MONTANA COLLEGE OF EDUCATION

Billings, Montana

Associated Architects

Billings, Montana