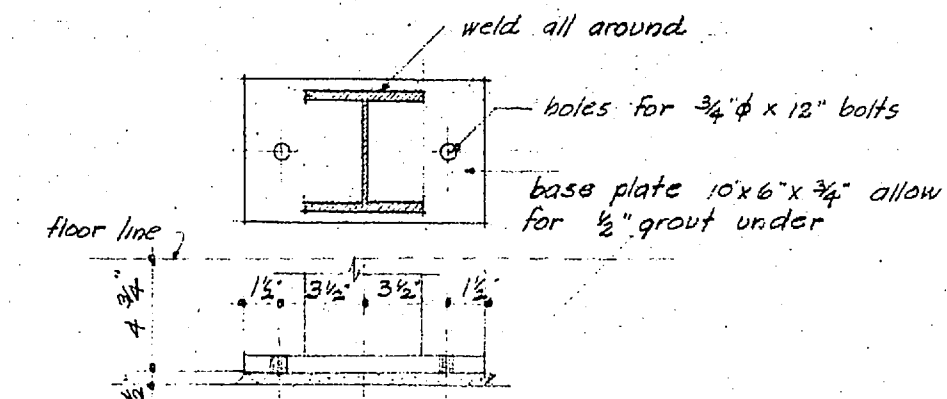


COLUMNS A-1, B-1, F-4 & G-4 3/8" x 1'-0" COLUMN A-2 3/8" x 1'-0" COLUMN A-3 3/8" x 1'-0" COLUMN B-3, C-3 & D-3 3/8" x 1'-0" COLUMNS B-2, G-2 & D-2 3/8" x 1'-0" COLUMNS E-3 & F-3 3/8" x 1'-0"

for long continuous beams as row B in bookstore & E in office wing, beams shall be approximately 20'-0" feet +/- a few feet. beam joints must occur over window mullions, also provide joint plates as shown on E-5 detail for typical mullion.

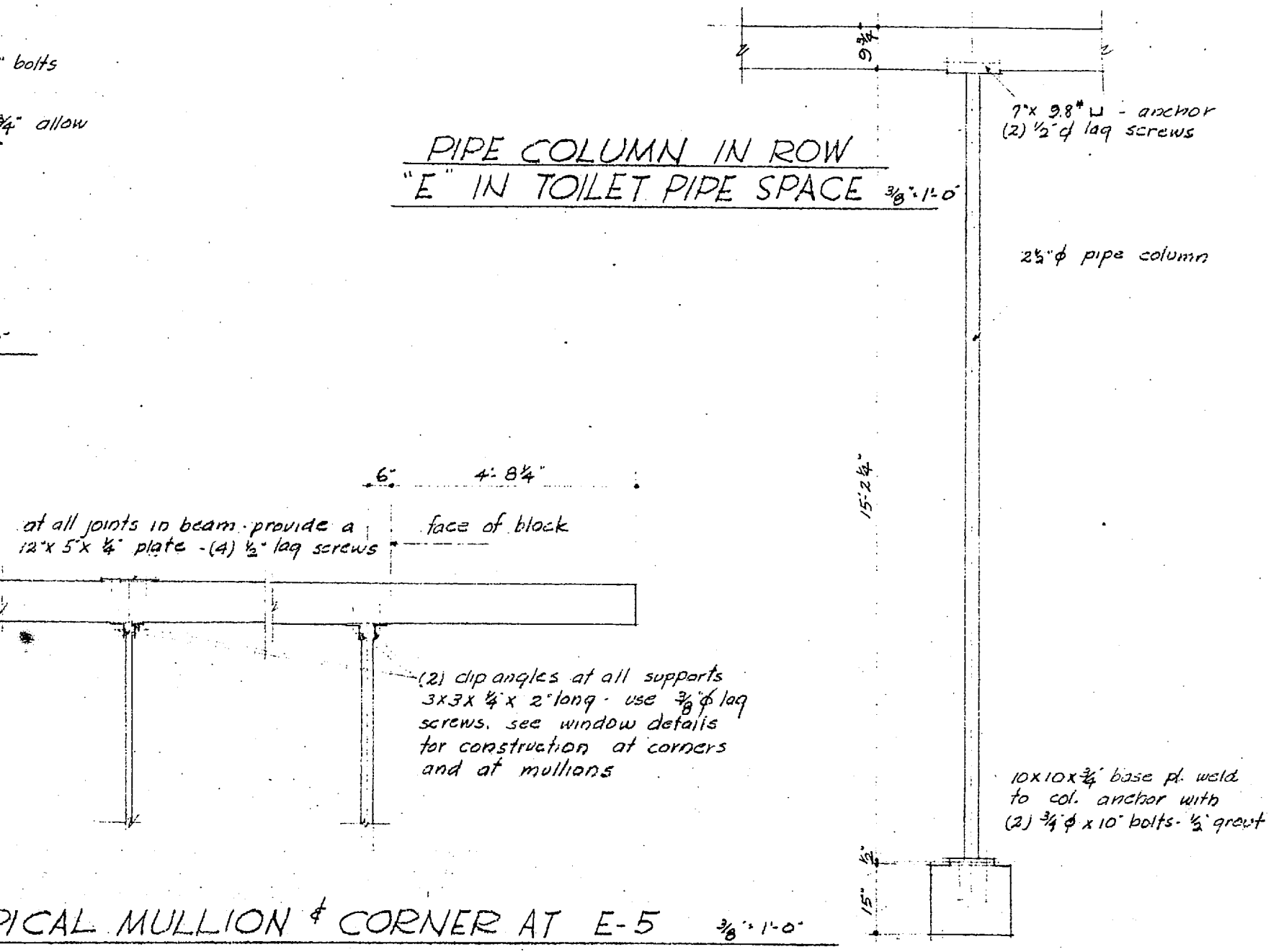
beam manufacturer shall give all glulams (one) coat of sealer at the plant. beam manufacturer shall also drill all holes and prepare all beams for anchoring so when delivered to the building site, they may be installed and erected without further drilling or cutting.

all beams are commercial appearance grade except the (3) beams between columns in row B which are 5 1/4 x 11 3/8 and those are industrial appearance grade.

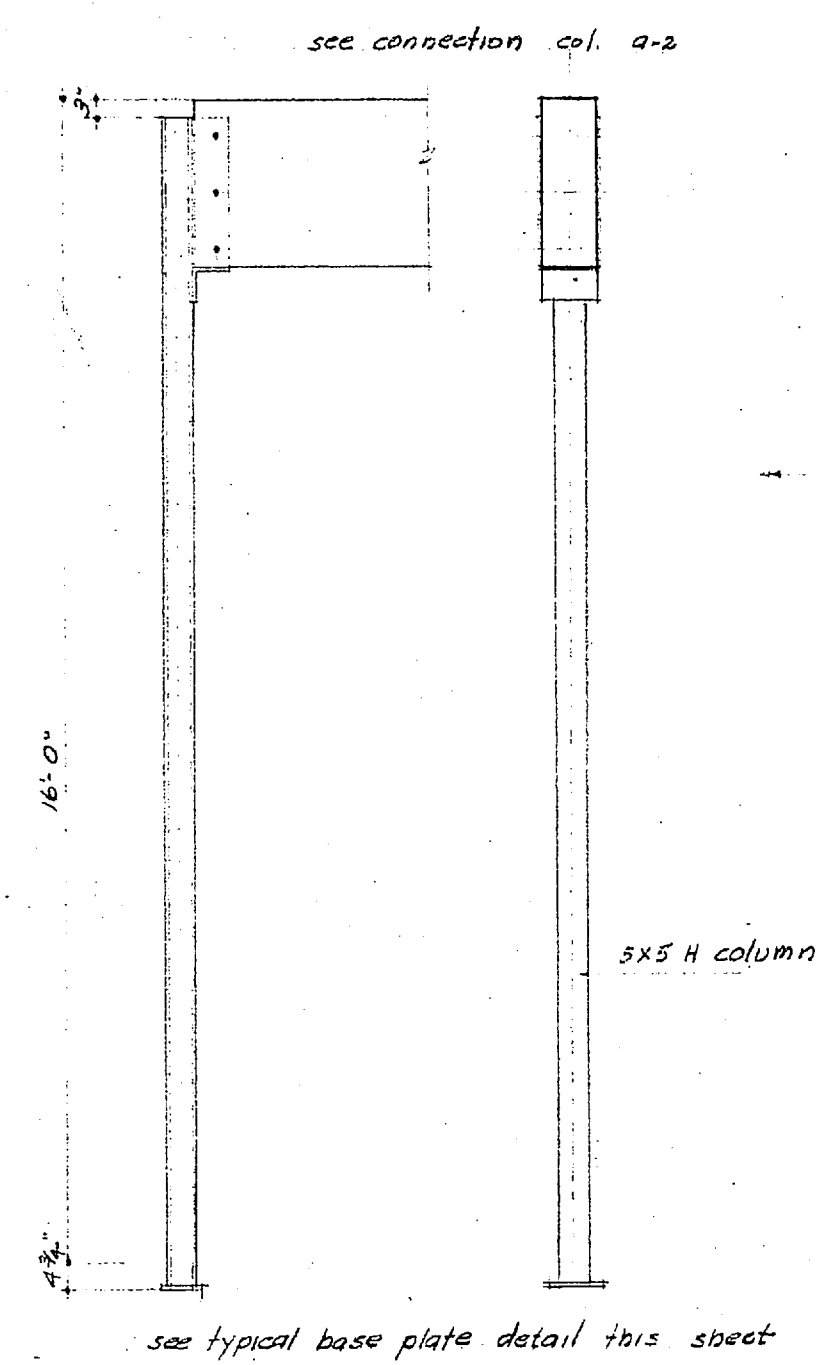


TYPICAL BASE PLATE 1 1/2" x 1'-0"

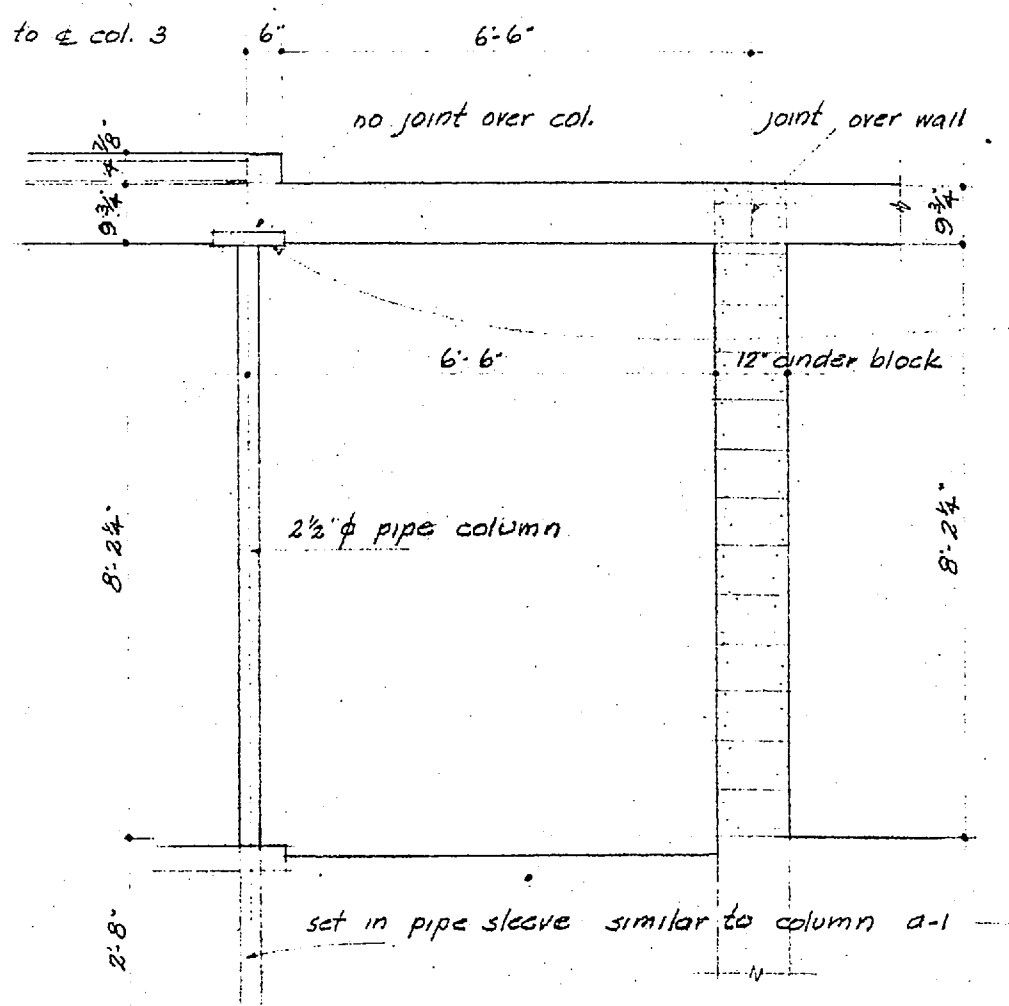
PIPE COLUMN IN ROW "E" IN TOILET PIPE SPACE 3/8" x 1'-0"



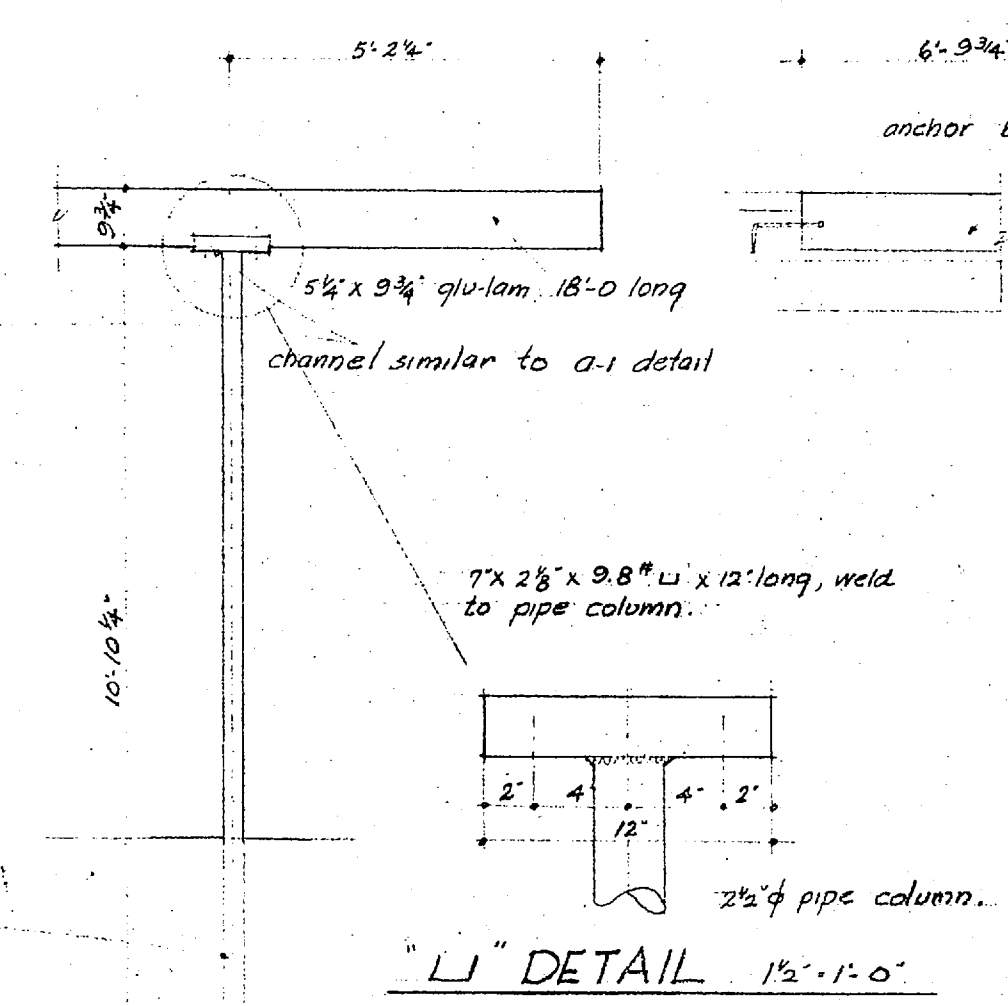
TYPICAL MULLION & CORNER AT E-5 3/8" x 1'-0"



COLUMNS E-2 & F-2 3/8" x 1'-0"

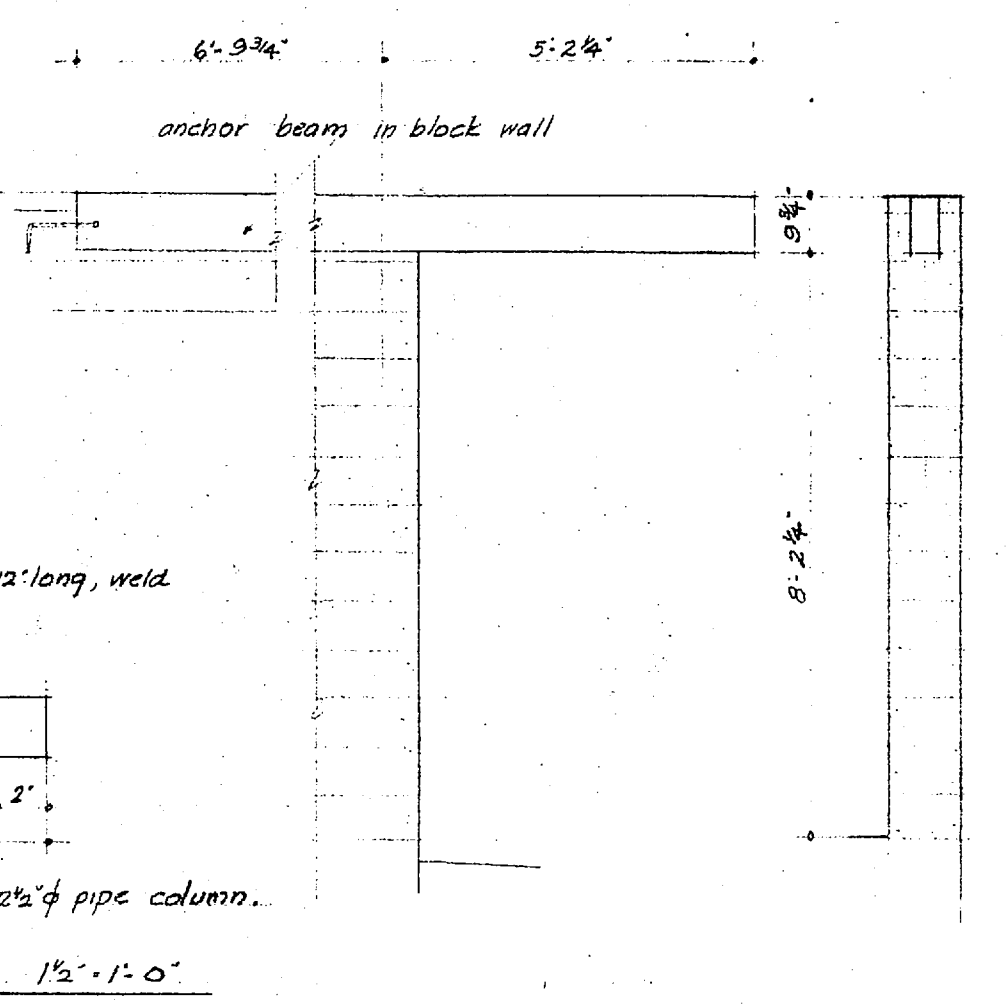


COLUMN E-4 3/8" x 1'-0"

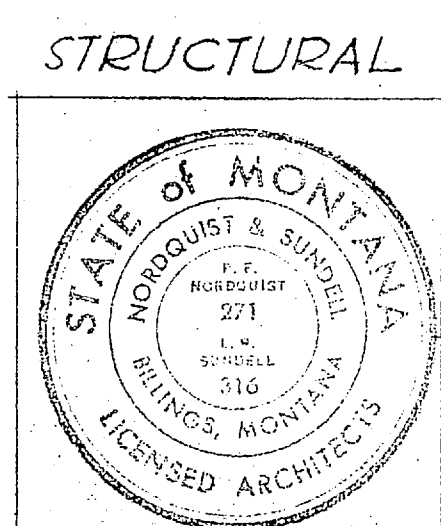


COLUMN C-5 3/8" x 1'-0"

"L" DETAIL 1 1/2" x 1'-0"



GLU-LAM BEAM AT D-5 3/8" x 1'-0"



STRUCTURAL DETAILS 3/8" x 1'-0"
 A STUDENT UNION BUILDING
 EASTERN MONTANA COLLEGE OF EDUCATION
 BILLINGS, MONTANA

drawn	LRS
checked	REN
date	APR 5 1954
job no.	1753

5
3