

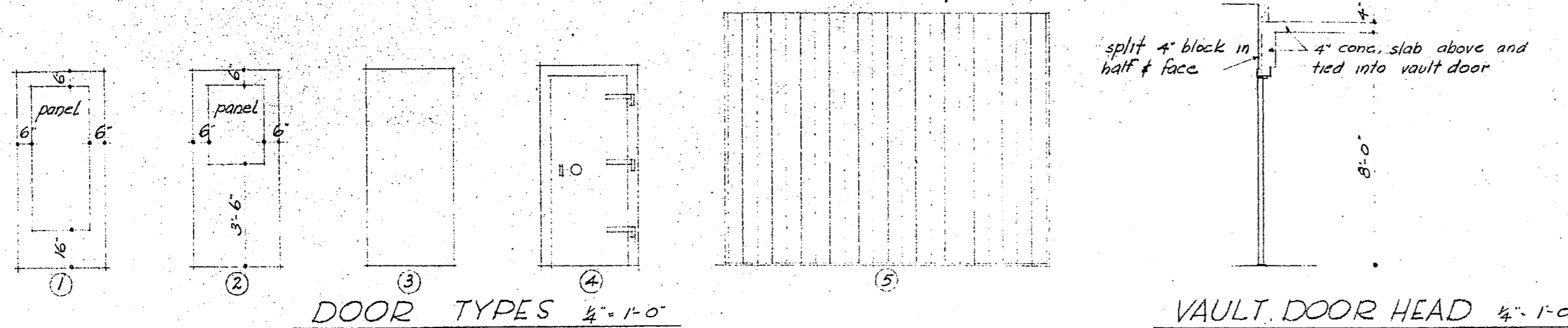
DOOR SCHEDULE

DOOR SYMBOL	QUANTITY	SIZE	DOOR TYPE	JAMB TYPE	MATERIAL	PANEL	THRESHOLD	BUTTS	CLOSER	LOCKSETS	MISC. HARDWARE	REMARKS
1,2	2	3'-0" x 6'-8" x 1 3/4"	B	A	birch	polished plate glass	4" concrete curb	5x5 BB	panic exit - 2590%	panic exit - 2590%	door stops floor type	basement area
3	1	" " " "	B	B	pine	4" ribbed wire glass	4" oak	5x5	none	none	push plates	boiler room
4,7	2	" " " "	B	C	kalamein vault	absure glass	4" oak	4x4	double acting spring with door frame	dead bolt - 8012	pull bars	transformer vault
5,6	2	" " " "	B	D	birch folding door	4" ribbed wire glass	4" oak	3 3/4 x 3 1/2	regular	dead bolt - 8012	kick plates (2 sides)	lounge
8	1	" " " "	A	E	birch folding door	4" ribbed wire glass	4" oak	3 3/4 x 3 1/2	regular	dead bolt - 8012	kick plates (2 sides)	dining
9	1	3'-4" x 6'-8" x 1 3/4"	A	F	birch folding door	4" ribbed wire glass	4" oak	3 3/4 x 3 1/2	regular	dead bolt - 8012	kick plates (2 sides)	lobby
10	1	3'-0" x 6'-8" x 1 3/4"	A	G	birch folding door	4" ribbed wire glass	4" oak	3 3/4 x 3 1/2	regular	dead bolt - 8012	kick plates (2 sides)	corridor
11	1	" " " "	A	H	birch folding door	4" ribbed wire glass	4" oak	3 3/4 x 3 1/2	regular	dead bolt - 8012	kick plates (2 sides)	vault
12	1	" " " "	A	I	birch folding door	4" ribbed wire glass	4" oak	3 3/4 x 3 1/2	regular	dead bolt - 8012	kick plates (2 sides)	information
13	1	" " " "	A	J	birch folding door	4" ribbed wire glass	4" oak	3 3/4 x 3 1/2	regular	dead bolt - 8012	kick plates (2 sides)	director of student act.
14	1	" " " "	A	K	birch folding door	4" ribbed wire glass	4" oak	3 3/4 x 3 1/2	regular	dead bolt - 8012	kick plates (2 sides)	student officers
15,18	2	" " " "	A	L	birch folding door	4" ribbed wire glass	4" oak	3 3/4 x 3 1/2	regular	dead bolt - 8012	kick plates (2 sides)	girls toilet
16	1	1'-8" x 6'-8" x 1 3/4"	A	M	birch folding door	4" ribbed wire glass	4" oak	3 3/4 x 3 1/2	regular	dead bolt - 8012	kick plates (2 sides)	boys toilet
17	1	3'-0" x 6'-8" x 1 3/4"	A	N	birch folding door	4" ribbed wire glass	4" oak	3 3/4 x 3 1/2	regular	dead bolt - 8012	kick plates (2 sides)	janitor
19	1	" " " "	A	O	birch folding door	4" ribbed wire glass	4" oak	3 3/4 x 3 1/2	regular	dead bolt - 8012	kick plates (2 sides)	barber shop
20	1	" " " "	A	P	birch folding door	4" ribbed wire glass	4" oak	3 3/4 x 3 1/2	regular	dead bolt - 8012	kick plates (2 sides)	student publications
21	1	" " " "	A	Q	birch folding door	4" ribbed wire glass	4" oak	3 3/4 x 3 1/2	regular	dead bolt - 8012	kick plates (2 sides)	storage no. 1
22,24	2	" " " "	A	R	birch folding door	4" ribbed wire glass	4" oak	3 3/4 x 3 1/2	regular	dead bolt - 8012	kick plates (2 sides)	storage no. 2
23	1	" " " "	A	S	birch folding door	4" ribbed wire glass	4" oak	3 3/4 x 3 1/2	regular	dead bolt - 8012	kick plates (2 sides)	gameroom
25	1	" " " "	A	T	birch folding door	4" ribbed wire glass	4" oak	3 3/4 x 3 1/2	regular	dead bolt - 8012	kick plates (2 sides)	bookstore
26	2	" " " "	A	U	birch folding door	4" ribbed wire glass	4" oak	3 3/4 x 3 1/2	regular	dead bolt - 8012	kick plates (2 sides)	coats
27	1	2'-8" x 6'-6"	A	V	birch folding door	4" ribbed wire glass	4" oak	3 3/4 x 3 1/2	regular	dead bolt - 8012	kick plates (2 sides)	one hour vault door
28	1	3'-4" x 6'-8" x 1 3/4"	A	W	birch folding door	4" ribbed wire glass	4" oak	3 3/4 x 3 1/2	regular	dead bolt - 8012	kick plates (2 sides)	kitchen
29	1	" " " "	A	X	birch folding door	4" ribbed wire glass	4" oak	3 3/4 x 3 1/2	regular	dead bolt - 8012	kick plates (2 sides)	storage no. 3
30	1	2'-0" x 6'-8" x 1 3/4"	A	Y	birch folding door	4" ribbed wire glass	4" oak	3 3/4 x 3 1/2	regular	dead bolt - 8012	kick plates (2 sides)	entry
31	1	3'-0" x 6'-8" x 1 3/4"	A	Z	birch folding door	4" ribbed wire glass	4" oak	3 3/4 x 3 1/2	regular	dead bolt - 8012	kick plates (2 sides)	toilet
32	1	3'-0" x 6'-4" x 1 3/4"	A	AA	birch folding door	4" ribbed wire glass	4" oak	3 3/4 x 3 1/2	regular	dead bolt - 8012	kick plates (2 sides)	
33	1	23'-11" x 12'-7 1/2" x 3/8"	A	AB	birch folding door	4" ribbed wire glass	4" oak	3 3/4 x 3 1/2	regular	dead bolt - 8012	kick plates (2 sides)	with heavy track
34	1	11'-4" x 8'-10 1/2" x 3/8"	A	AC	birch folding door	4" ribbed wire glass	4" oak	3 3/4 x 3 1/2	regular	dead bolt - 8012	kick plates (2 sides)	
35	1	21'-0" x 8'-10 1/2" x 3/8"	A	AD	birch folding door	4" ribbed wire glass	4" oak	3 3/4 x 3 1/2	regular	dead bolt - 8012	kick plates (2 sides)	
36	1	3'-0" x 6'-8" x 1 3/4"	A	AE	birch folding door	4" ribbed wire glass	4" oak	3 3/4 x 3 1/2	regular	dead bolt - 8012	kick plates (2 sides)	
37	2	3'-0" x 6'-8" x 1 3/4"	A	AF	birch folding door	4" ribbed wire glass	4" oak	3 3/4 x 3 1/2	regular	dead bolt - 8012	kick plates (2 sides)	

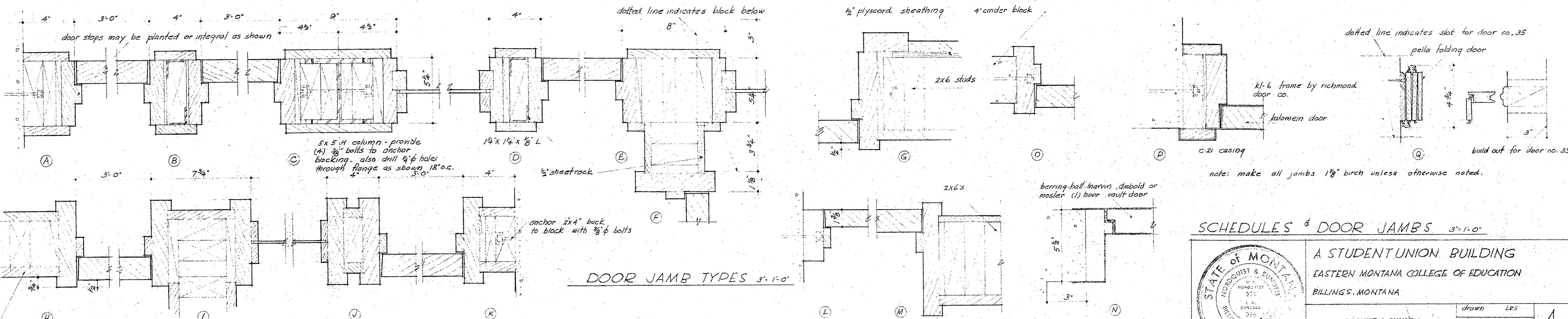
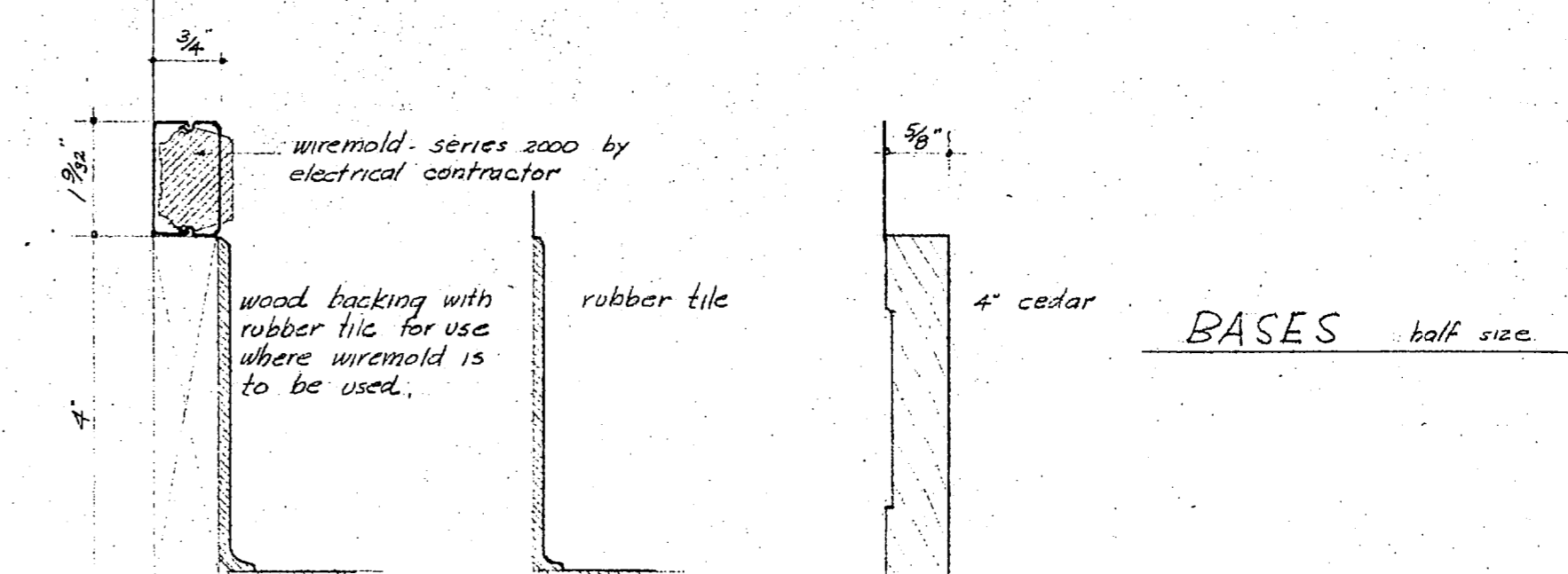
FINISH SCHEDULE

ROOM	FLOORS	WALLS	CEILING	BASE	PAINTING & FINISHING				REMARKS
					WALLS	CEILING	DOORS	TRIM	
basement area		concrete	unfinished	4" rubber tile	no finish	no finish	no finish	no finish	
boiler room		concrete	unfinished	4" rubber tile	no finish	no finish	no finish	no finish	
transformer vault		concrete	unfinished	4" rubber tile	no finish	no finish	no finish	no finish	
lounge		concrete	unfinished	4" rubber tile	no finish	no finish	no finish	no finish	
dining		concrete	unfinished	4" rubber tile	no finish	no finish	no finish	no finish	
lobby		concrete	unfinished	4" rubber tile	no finish	no finish	no finish	no finish	
corridor		concrete	unfinished	4" rubber tile	no finish	no finish	no finish	no finish	
vault		concrete	unfinished	4" rubber tile	no finish	no finish	no finish	no finish	
information		concrete	unfinished	4" rubber tile	no finish	no finish	no finish	no finish	
director of student act.		concrete	unfinished	4" rubber tile	no finish	no finish	no finish	no finish	
student officers		concrete	unfinished	4" rubber tile	no finish	no finish	no finish	no finish	
girls toilet		concrete	unfinished	4" rubber tile	no finish	no finish	no finish	no finish	
boys toilet		concrete	unfinished	4" rubber tile	no finish	no finish	no finish	no finish	quarry tile base - see detail
janitor		concrete	unfinished	4" rubber tile	no finish	no finish	no finish	no finish	
barber shop		concrete	unfinished	4" rubber tile	no finish	no finish	no finish	no finish	
student publications		concrete	unfinished	4" rubber tile	no finish	no finish	no finish	no finish	
storage no. 1		concrete	unfinished	4" rubber tile	no finish	no finish	no finish	no finish	
storage no. 2		concrete	unfinished	4" rubber tile	no finish	no finish	no finish	no finish	
gameroom		concrete	unfinished	4" rubber tile	no finish	no finish	no finish	no finish	
bookstore		concrete	unfinished	4" rubber tile	no finish	no finish	no finish	no finish	
coats		concrete	unfinished	4" rubber tile	no finish	no finish	no finish	no finish	
kitchen		concrete	unfinished	4" rubber tile	no finish	no finish	no finish	no finish	see specifications
storage no. 3		concrete	unfinished	4" rubber tile	no finish	no finish	no finish	no finish	
entry		concrete	unfinished	4" rubber tile	no finish	no finish	no finish	no finish	
toilet		concrete	unfinished	4" rubber tile	no finish	no finish	no finish	no finish	

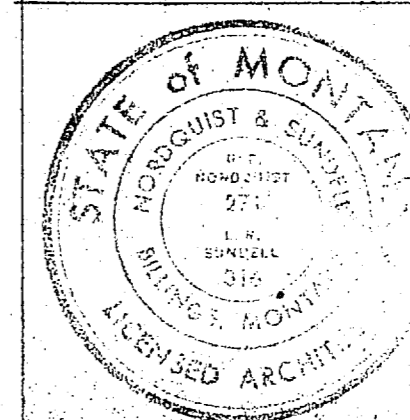
* see specifications for locksets top and bottom bolts are corbin #2877-12" long



see specifications for finish on exterior doors



SCHEDULES & DOOR JAMBS 3'-1-0"



A STUDENT UNION BUILDING
EASTERN MONTANA COLLEGE OF EDUCATION
BILLINGS, MONTANA

drawn	LES	A 10
checked	REN	
date	APR 5 1954	
job no.	1753	