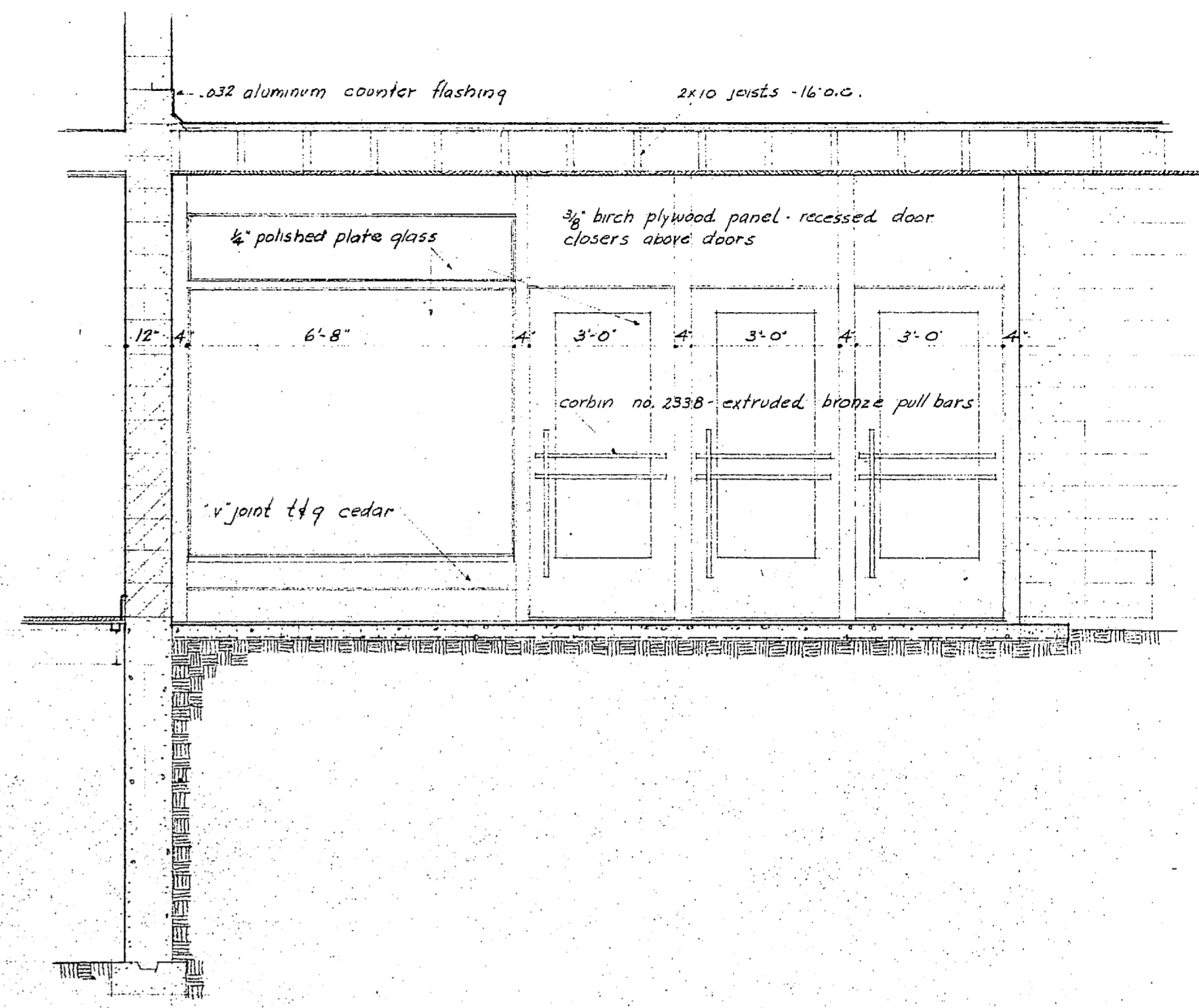
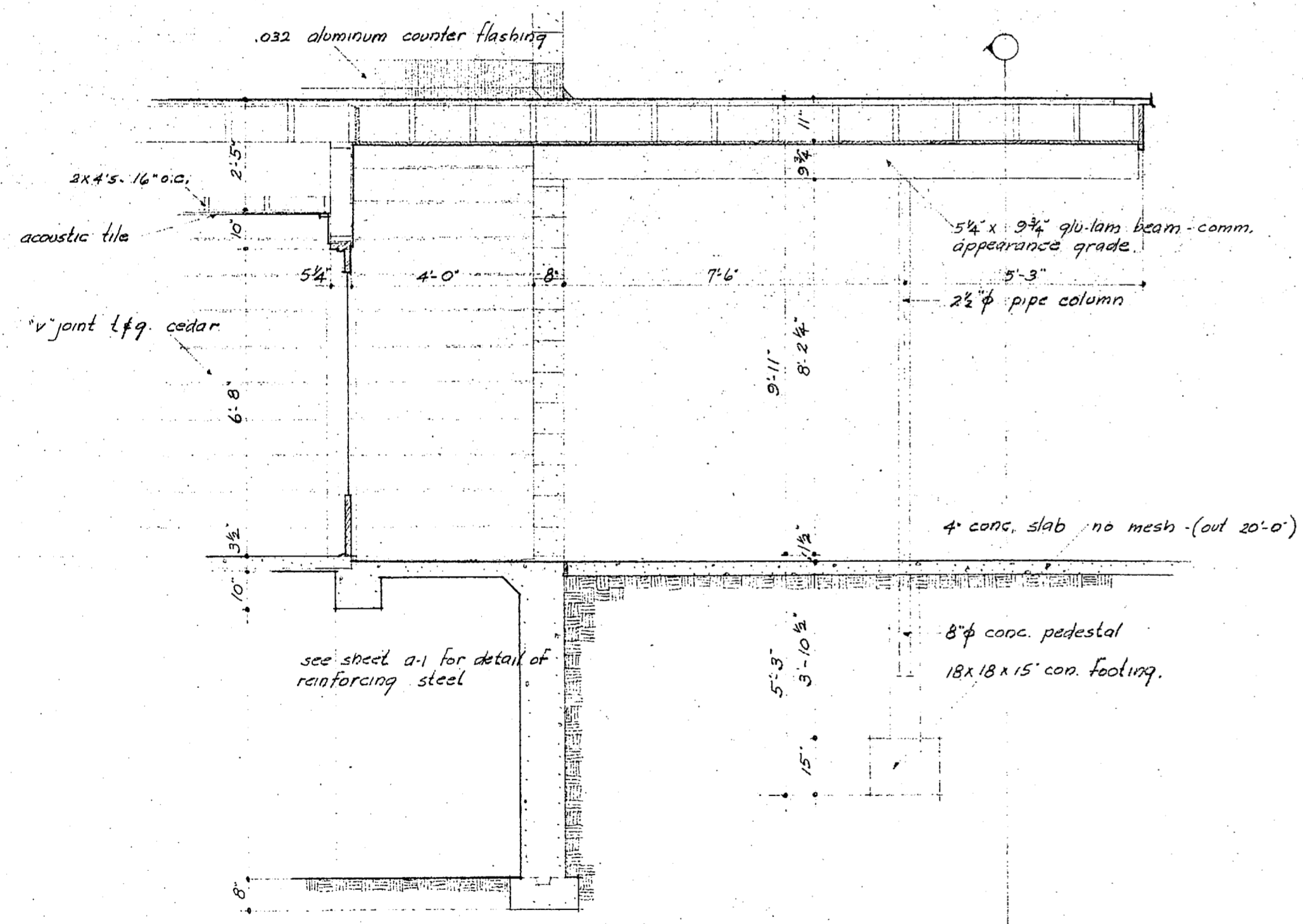


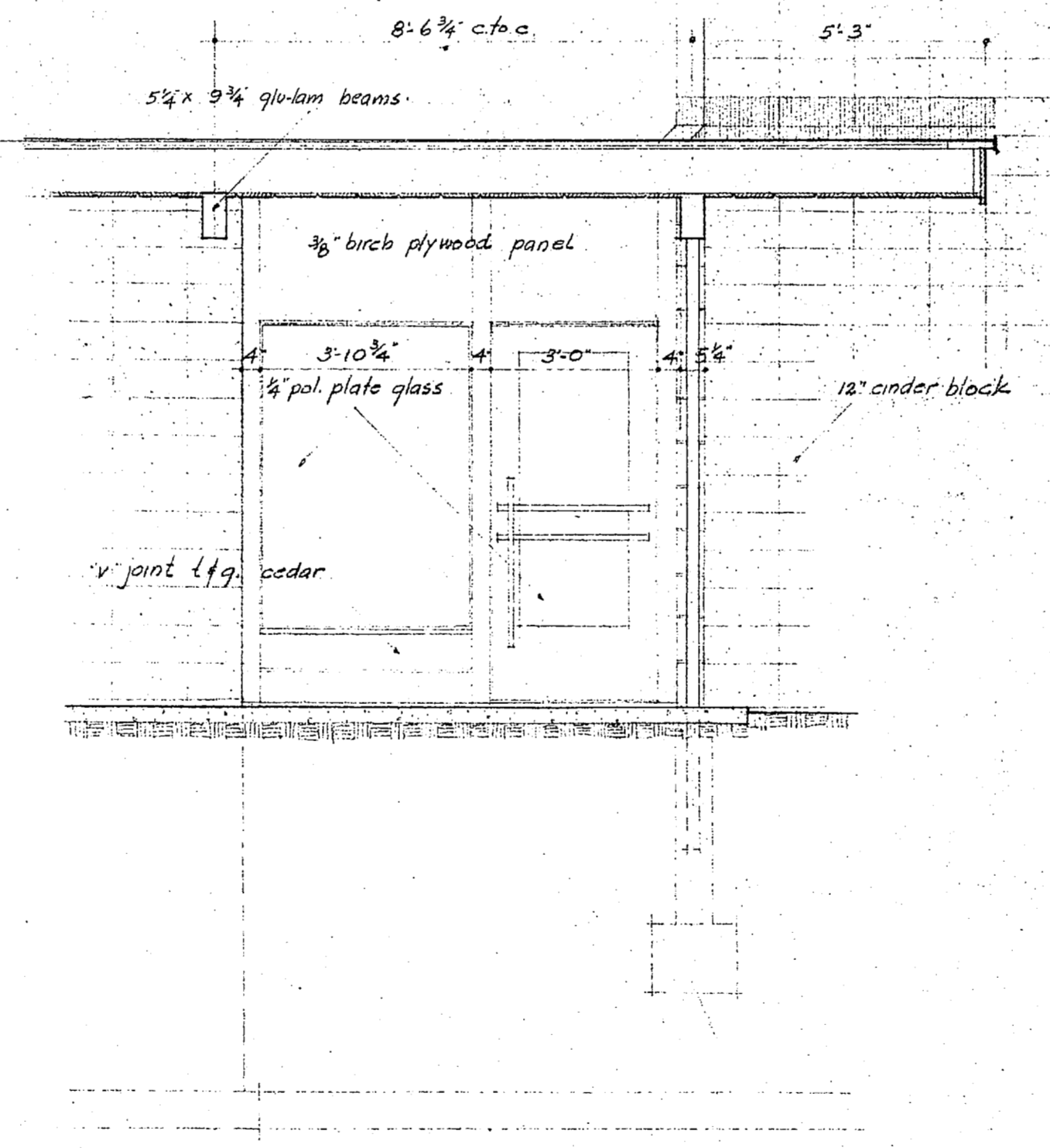
SECTION THRU FRONT ENTRANCE & CANOPY 3/8" = 1'-0"



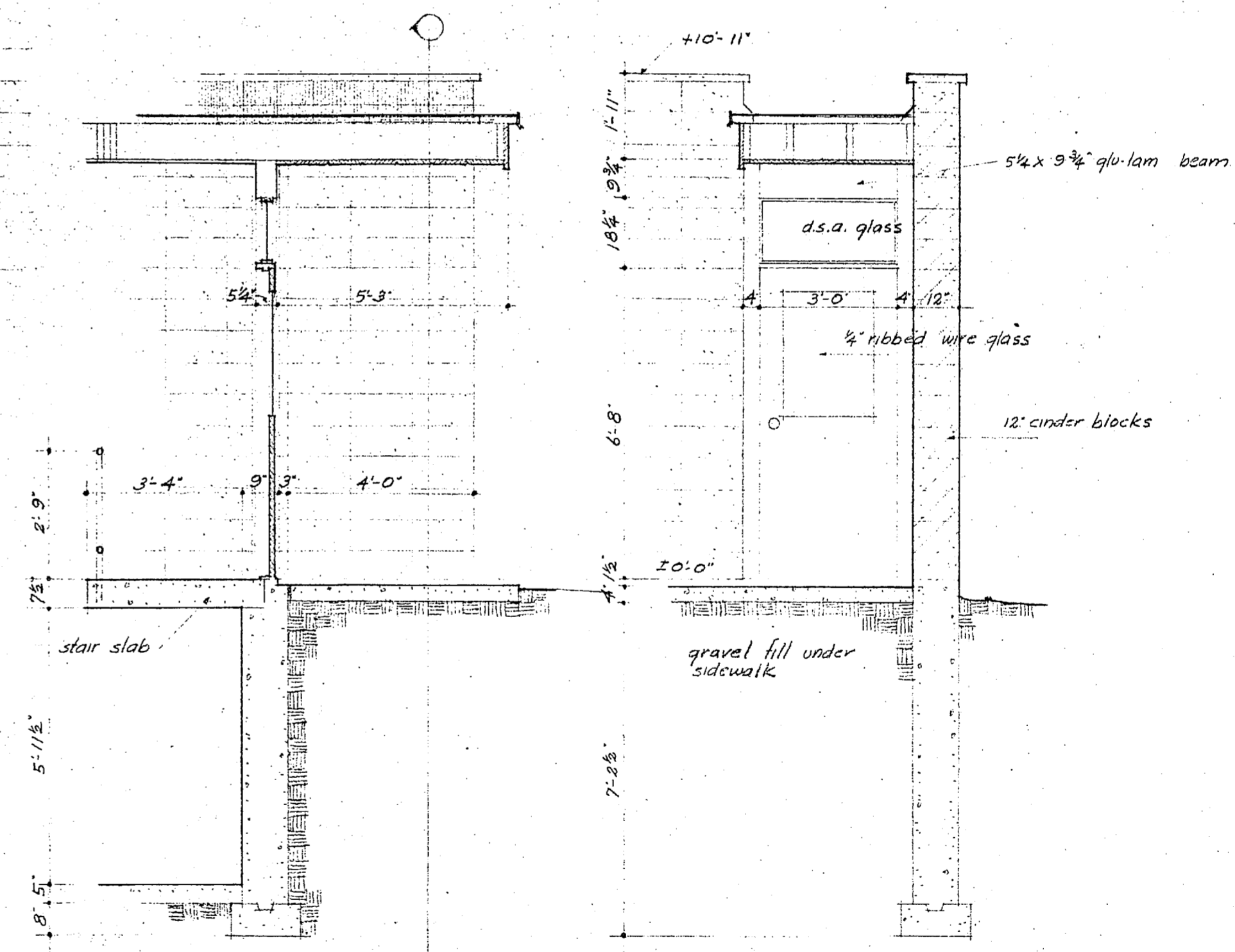
SECTION THRU CANOPY LOOKING AT FRONT ENTRANCE



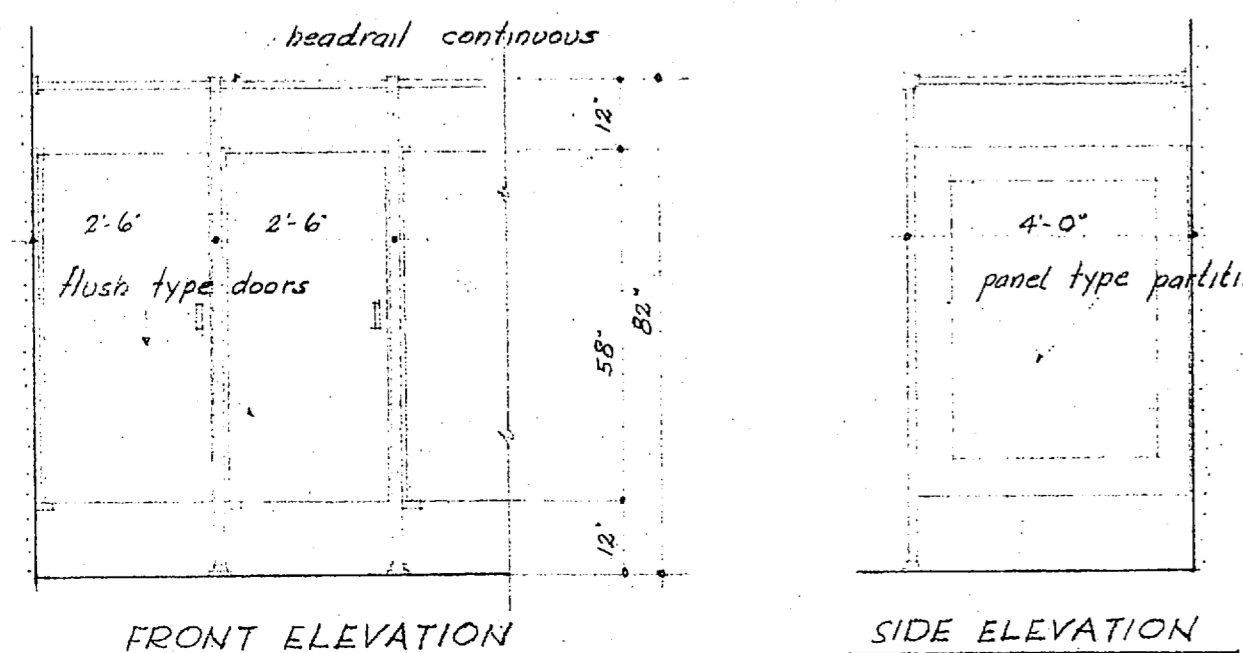
SECTION THRU EAST ENTRANCE 3/8" = 1'-0"



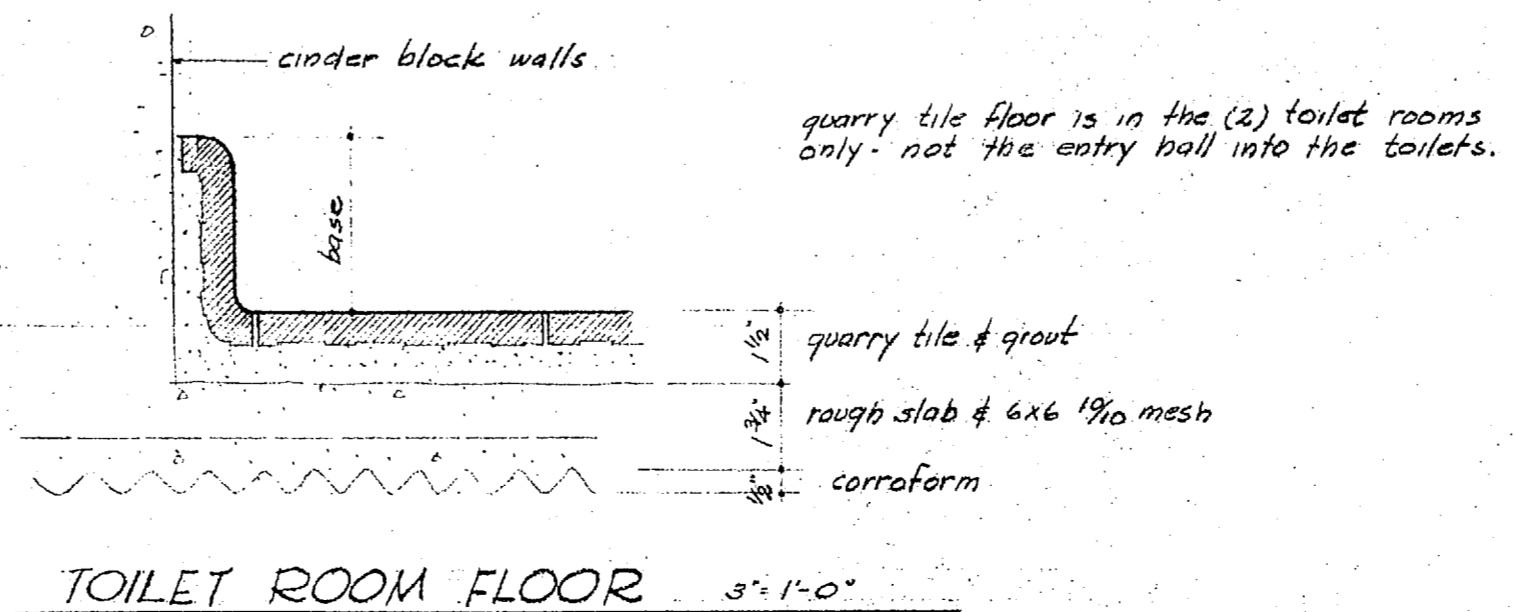
SECTION LOOKING AT EAST ENTRANCE 3/8" = 1'-0"



SECTION & ELEVATION OF NORTH BOILER ROOM ENTRANCE 3/8" = 1'-0"



TOILET PARTITIONS 3/8" = 1'-0"



TOILET ROOM FLOOR 3/8" = 1'-0"

ENTRANCE DETAILS 3/8" = 1'-0"

A STUDENT UNION BUILDING
EASTERN MONTANA COLLEGE OF EDUCATION
BILLINGS, MONTANA

NORDQUIST & SUNDELL
ARCHITECTS
BILLINGS, MONTANA

drawn LBS
checked REN
date APR 5 1954
job no. 1753

STATE OF MONTANA
REGISTERED ARCHITECT
LICENSED ARCHITECTS

A
9