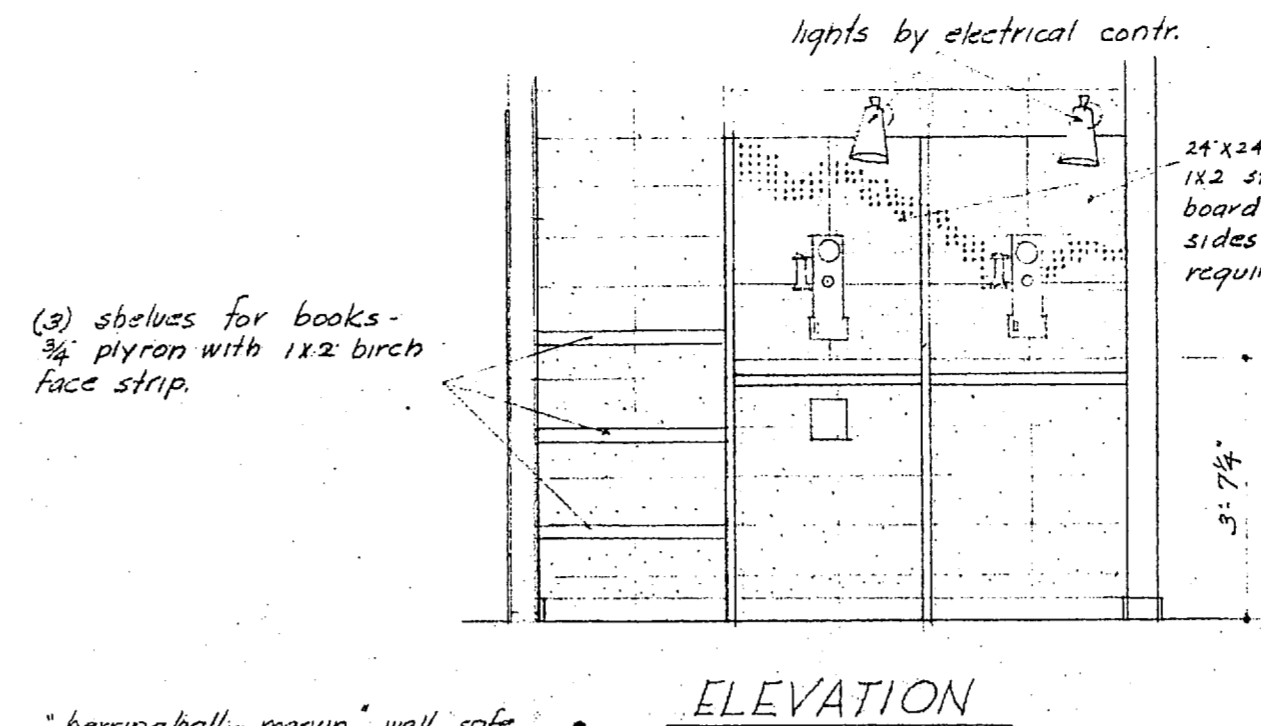
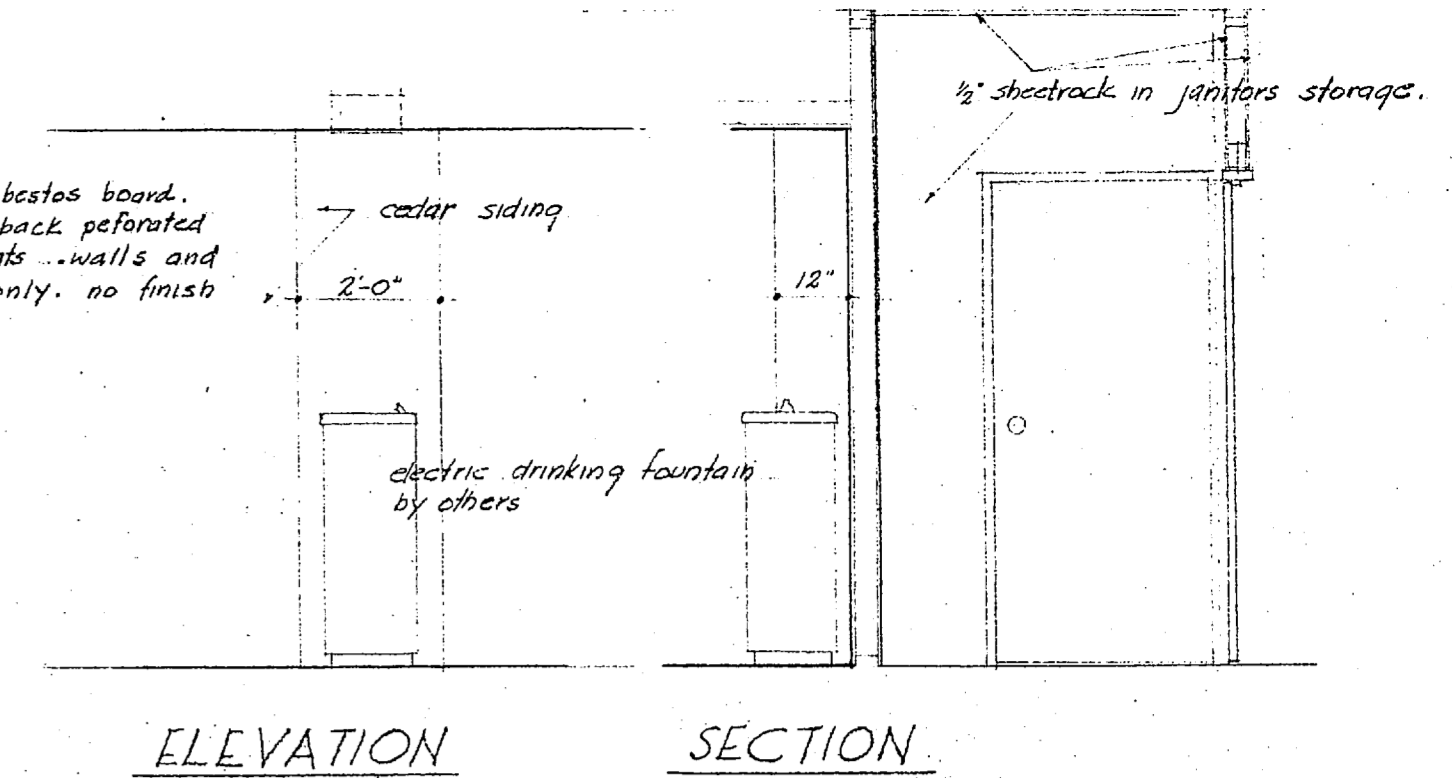


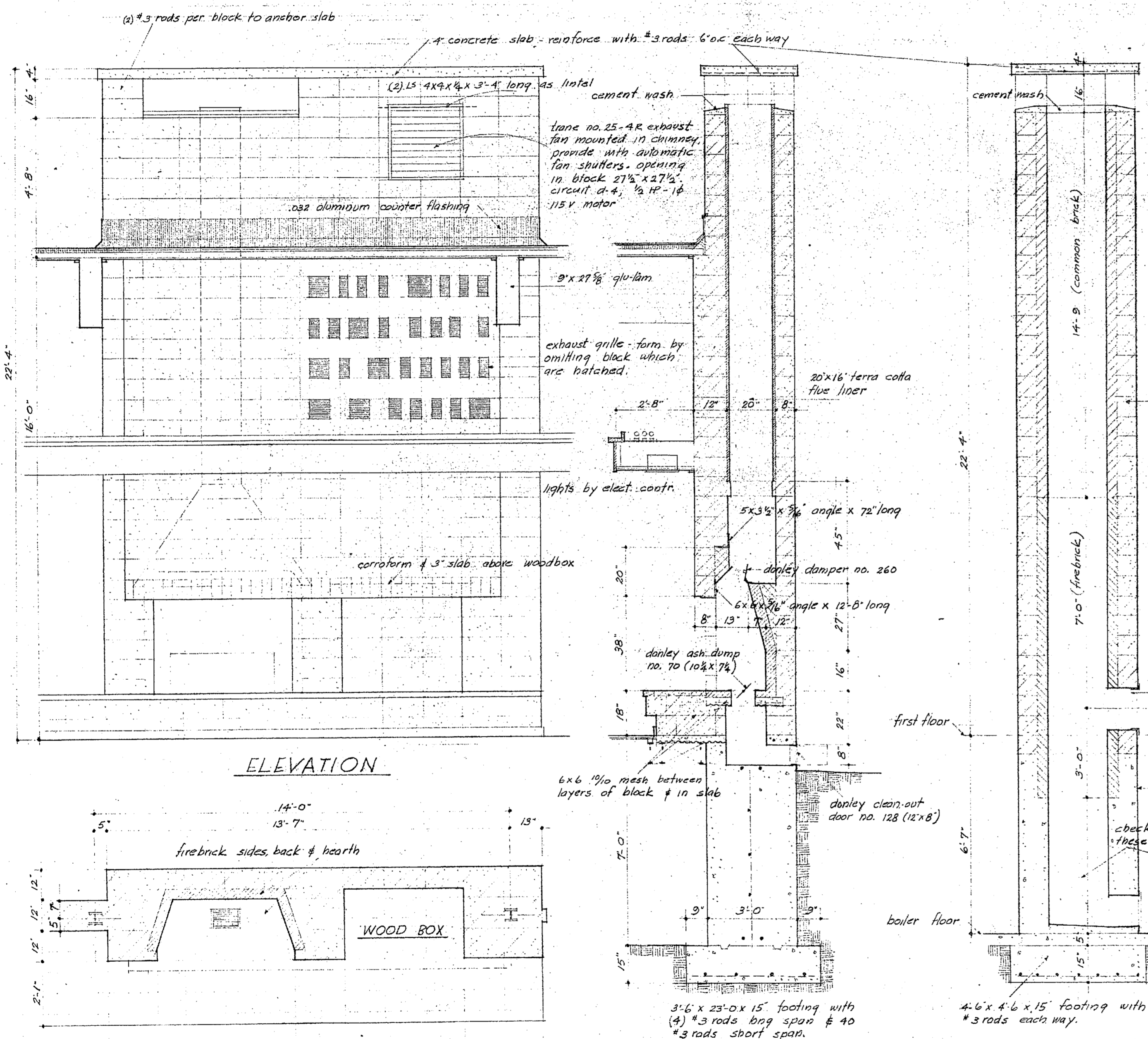
BOOK STORAGE UNIT 3/8" = 1'-0"
two required



TELEPHONE BOOTH DETAIL 3/8" = 1'-0"

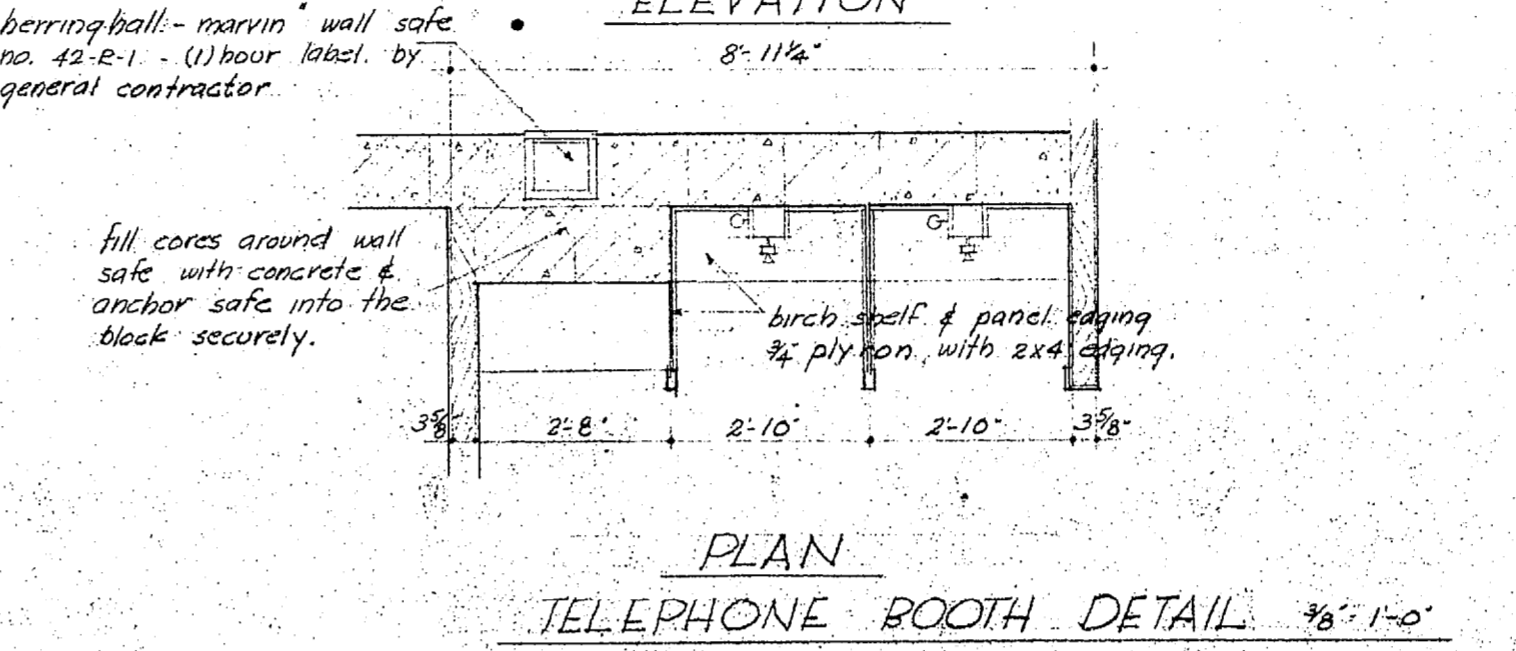


DRINKING FOUNTAIN RECESS 3/8" = 1'-0"

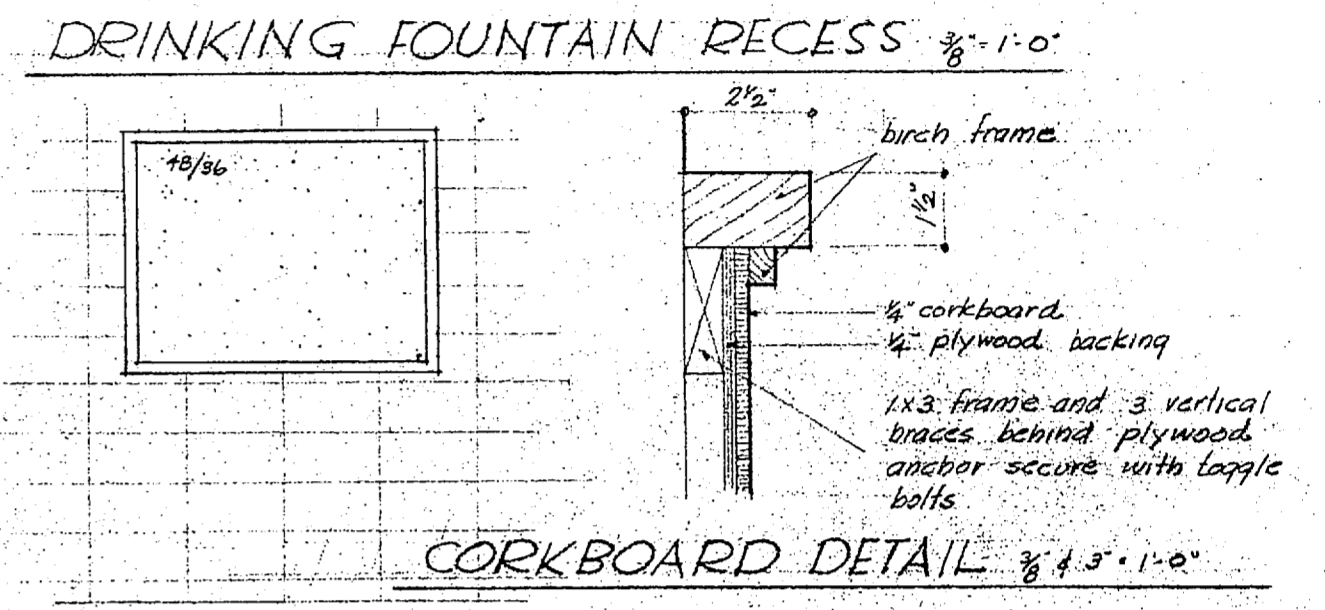


FIREPLACE DETAILS 3/8" = 1'-0"

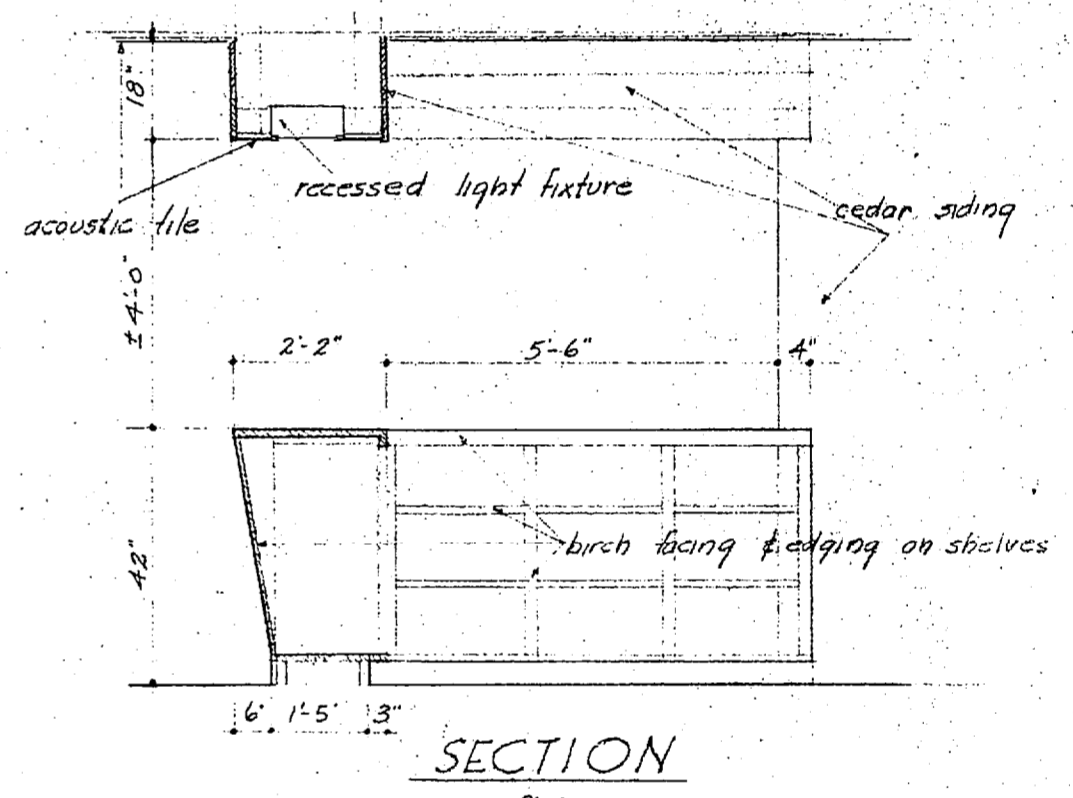
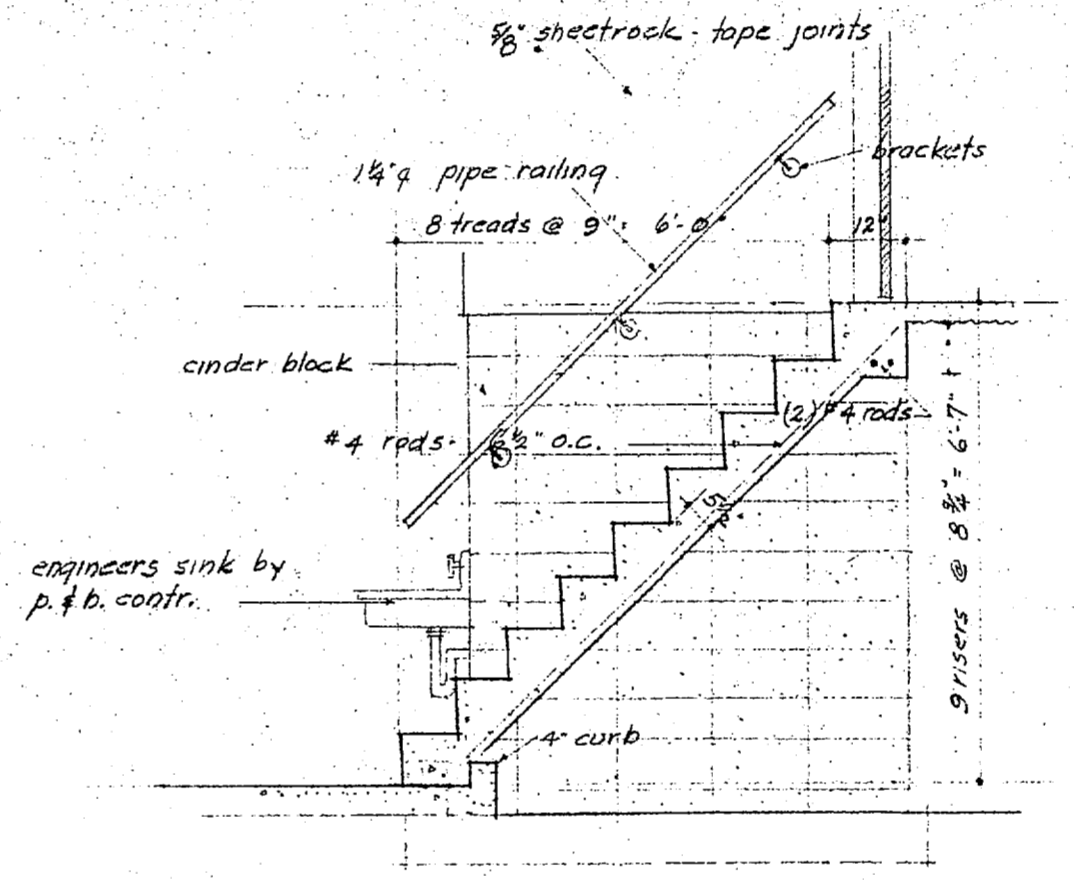
CHIMNEY DETAIL 3/8" = 1'-0"



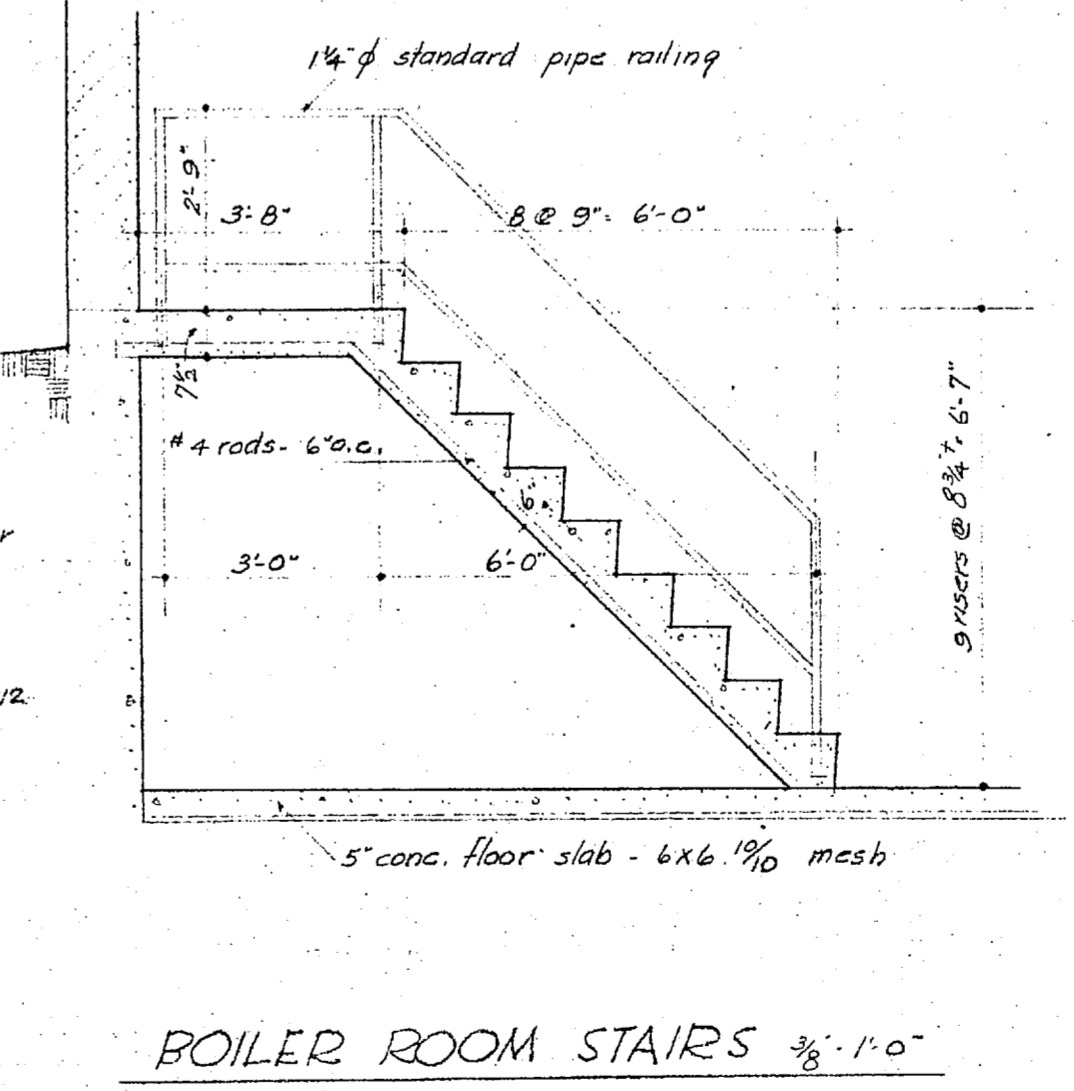
BOILER ROOM STAIRS 3/8" = 1'-0"



CORKBOARD DETAIL 3/8" = 1'-0"



CABINET IN INFORMATION 3/8" = 1'-0"



BOILER ROOM STAIRS 3/8" = 1'-0"

FIREPLACE & OTHER DETAILS

| | | |
|--|--|--------|
| | A STUDENT UNION BUILDING EASTERN MONTANA COLLEGE OF EDUCATION BILLINGS, MONTANA | |
| | drawn LES checked REN date APR 5 1954 job no. 1753 | A B |
| | NORDQUIST & SUNDELL ARCHITECTS BILLINGS, MONTANA | |
| | 1753 | |