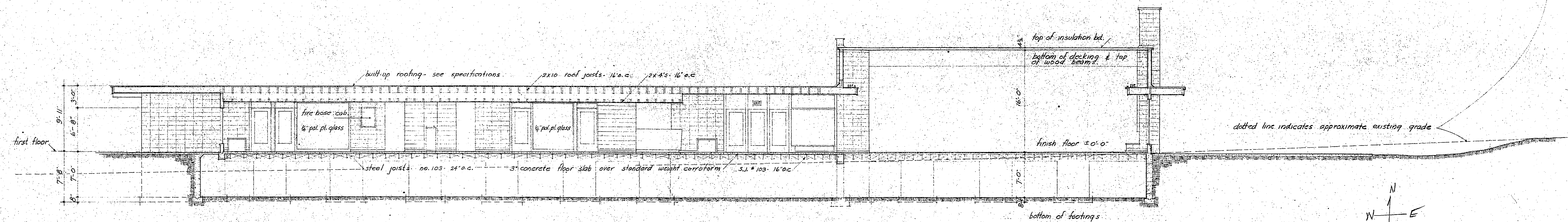
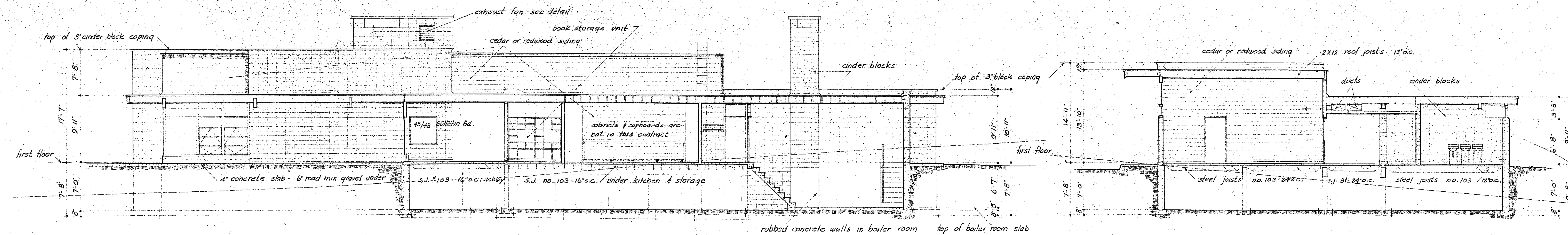
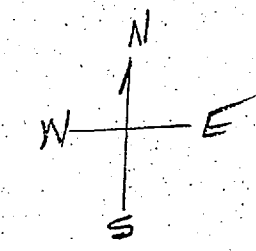


SECTION 'A-A' LOOKING NORTH 1/8" = 1'-0"

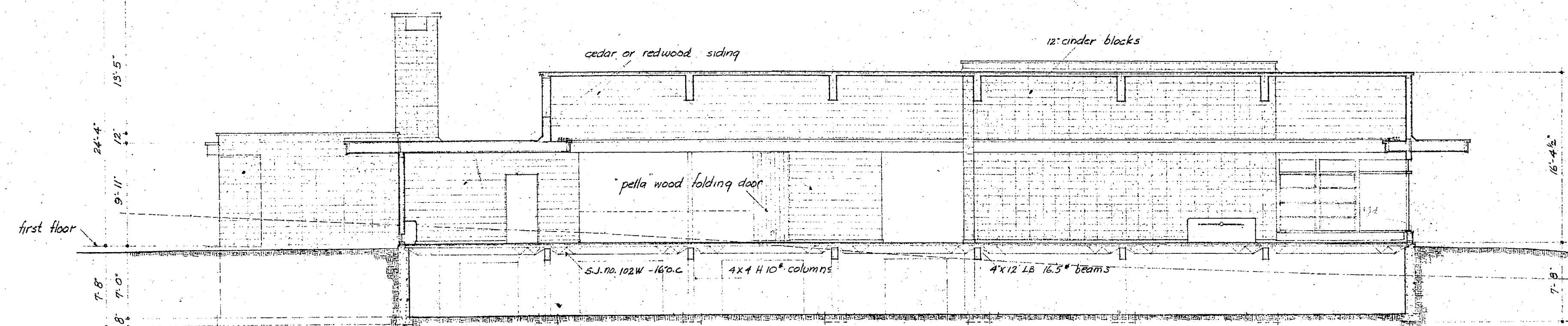


SECTION 'B-B' LOOKING SOUTH 1/8" = 1'-0"

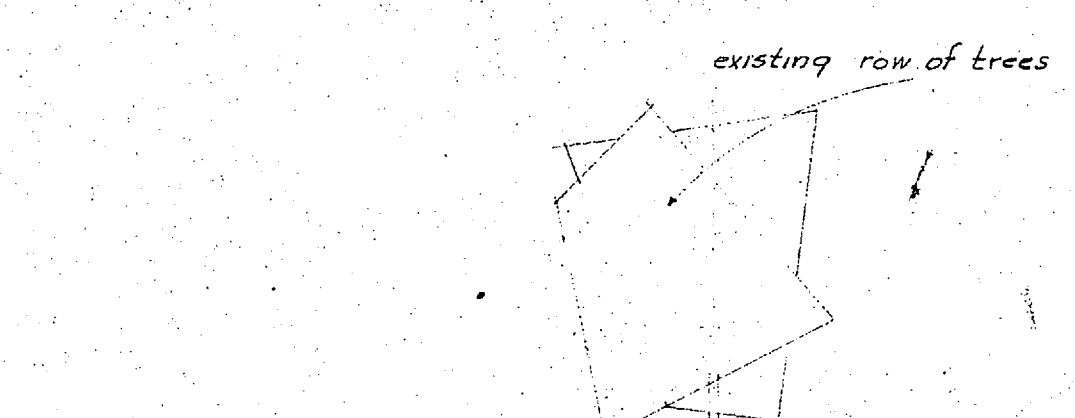


SECTION 'C-C' LOOKING WEST 1/8" = 1'-0"

SECTION 'E-E' LOOKING EAST 1/8" = 1'-0"



SECTION 'D-D' LOOKING EAST 1/8" = 1'-0"



dotted line indicates approximate existing grade.

SECTIONS 1/8" = 1'-0"

	A STUDENT UNION BUILDING		A
	EASTERN MONTANA COLLEGE OF EDUCATION		
	BILLINGS, MONTANA		
	BILLINGS, MONTANA		
drawn	LES		5
checked	REN		
date	APR 5 1954		
job no.	1758		