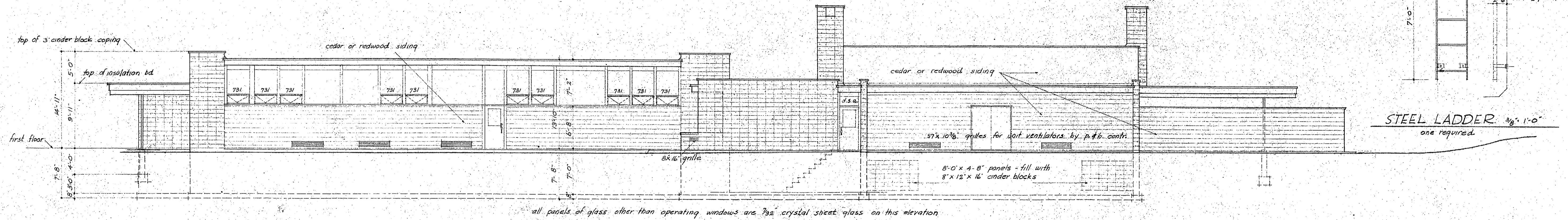


SOUTH ELEVATION 1/8" = 1'-0"

all panels of glass on this elevation below 6'-8" and other than operating windows are 1/4" polished plate glass.

3/4" rods as rungs: 16" o.c.
1/2" x 2" bars, weld rungs to bars

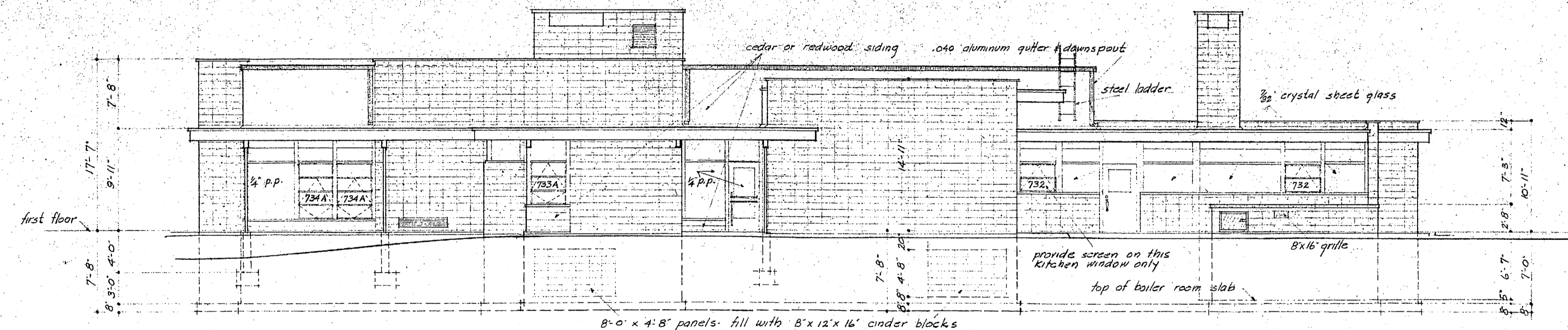
anchor to wall with 1/2" bolts.



NORTH ELEVATION 1/8" = 1'-0"

all panels of glass other than operating windows are 3/32" crystal sheet glass on this elevation.

STEEL LADDER 3/8" = 1'-0"
one required



EAST ELEVATION 1/8" = 1'-0"

notes:
numbers shown on windows refer to 'cupples' aluminum windows, series 700. any substitution shall have architects approval prior to bid letting date or they shall be rejected.

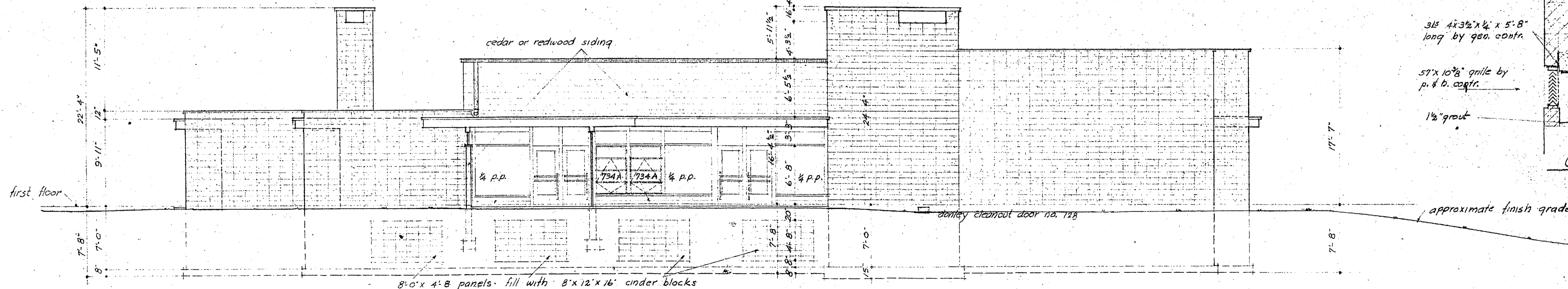
unless otherwise noted, all glass on elevations shown on this sheet shall be d.s.a. in all operating windows and above transom bar or 6'-8".

all cinder blocks shown on exterior walls are 8" high, 12" wide and 16" long. see specifications and structural sheets for reinforcing of block walls. fill cores of block with zonalite insulation where the cores are not reinforced. all cinder block shall be layed with a stacked joint as indicated. no paint required on cinder block. provide clear sealer as specified.

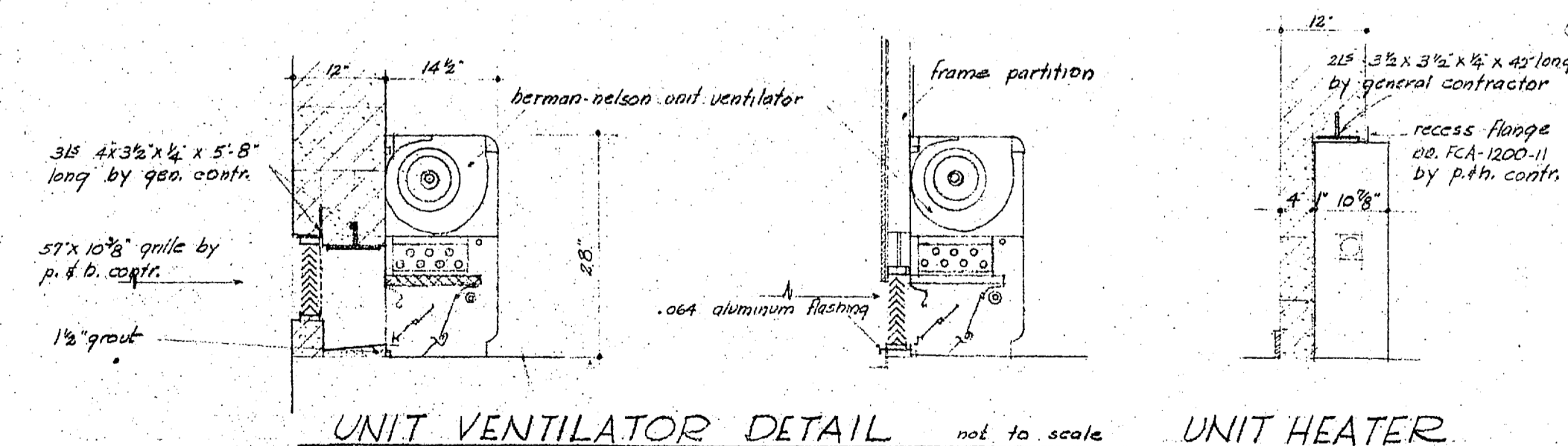
exterior siding shall be rough sawn on the exposed side, finished on the back side. y-joint # 9 no. 2 common western red cedar. (center matched). see specifications for stain.

all grilles for unit ventilators shall be furnished by plumbing & heating contr.

exhaust fans, scuttles and skydomes are not shown on the elevations or sections. see first floor plan and roof plan for location.



WEST ELEVATION 1/8" = 1'-0"



UNIT VENTILATOR DETAIL not to scale **UNIT HEATER**

ELEVATIONS 1/8" = 1'-0"

	A STUDENT UNION BUILDING EASTERN MONTANA COLLEGE OF EDUCATION BILLINGS, MONTANA		drawn LES checked REN date APR 5 1954 job no. 1758	A 4
	NORDQUIST & SUNDELL ARCHITECTS BILLINGS, MONTANA			
	12" x 12" x 1/2" x 45" long by general contractor recess flange no. 1CA-1200-11 by p.h. contr.			
	3/8" 4 3/8" x 1/4" x 5'-8" long by gen. contr. 57" x 10 3/8" grille by p. & h. contr. 1 1/2" grout			