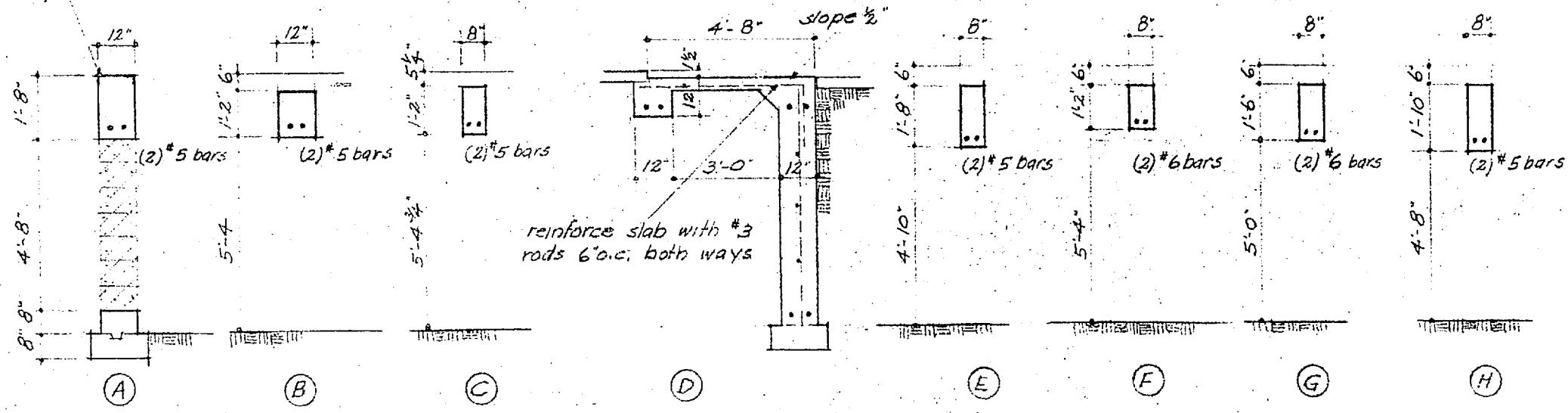


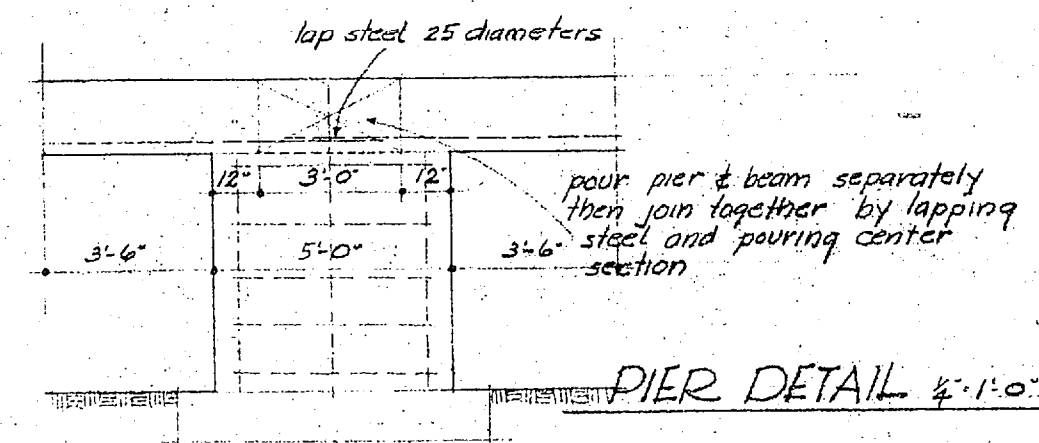
- notes:
1. provide an 18" wide x 8" deep concrete footing under all walls unless otherwise noted. for less than 12" walls provide a 3" projection.
 2. reinforce exterior walls with (2) #5 bars top and bottom of concrete wall and #3 bars 18" o.c. vertically. also (3) #3 rods horizontally.
 3. reinforce all slabs inside with 6x6 19# mesh unless otherwise noted.
 4. concrete beams may be prefabricated - check with architect on method.
 5. reinforce pier with (3) #5 bars as shown in detail below, tie with (5) #3 rods.
 6. no steel in footings unless otherwise noted.

top varies, check different conditions



anchor 2x2x 1/4" to top of concrete beam - see a.6 and a.7. for further details

CONCRETE BEAMS 1/4" = 1'-0"



PIER DETAIL 1/4" = 1'-0"

FOUNDATION PLAN 1/8" = 1'-0"

A STUDENT UNION BUILDING
EASTERN MONTANA COLLEGE OF EDUCATION
BILLINGS, MONTANA

NORDQUIST & SUNDELL
ARCHITECTS
BILLINGS, MONTANA

drawn LES
checked R.E.H.
date APR 5 1954
job no. 1753

STATE OF MONTANA
NORDQUIST & SUNDELL
REGISTERED ARCHITECTS
BILLINGS, MONTANA
NO. 2711
SUNDELL
316

A
1