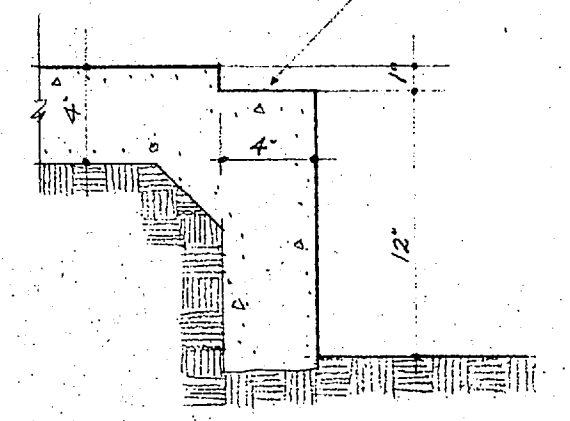
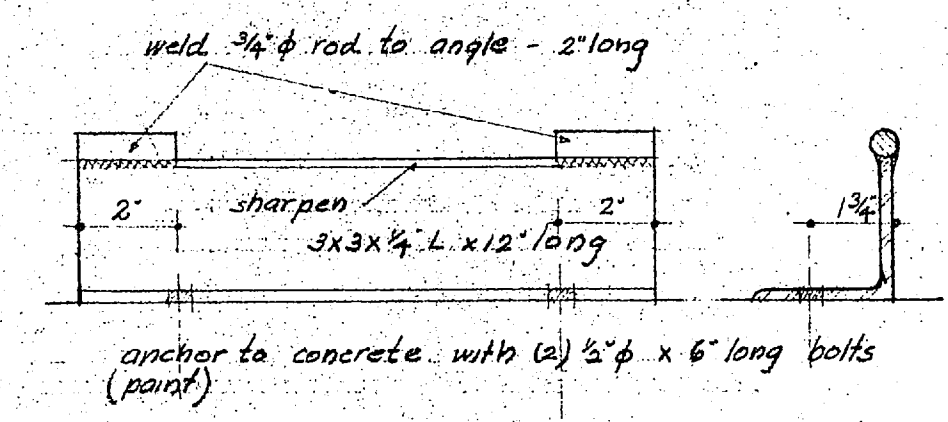


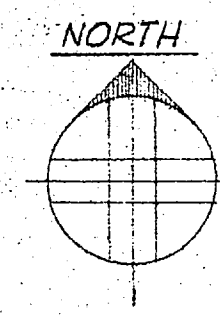
"gray" riveted grating no. 522-1-A
main bar 1" x 1/2", beat bar 3/4" x 1/2"
center to center of grating bars 3/4"
4'-0" x 7'-0". two required.



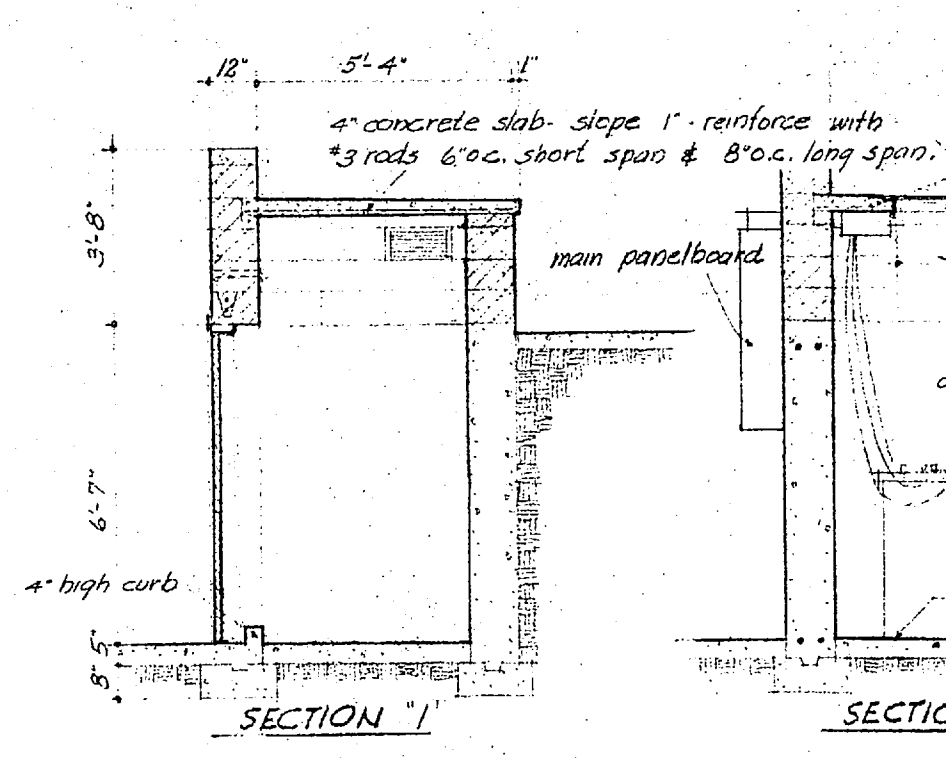
SIDEWALK & GRATING DETAIL 1/2" = 1'-0"



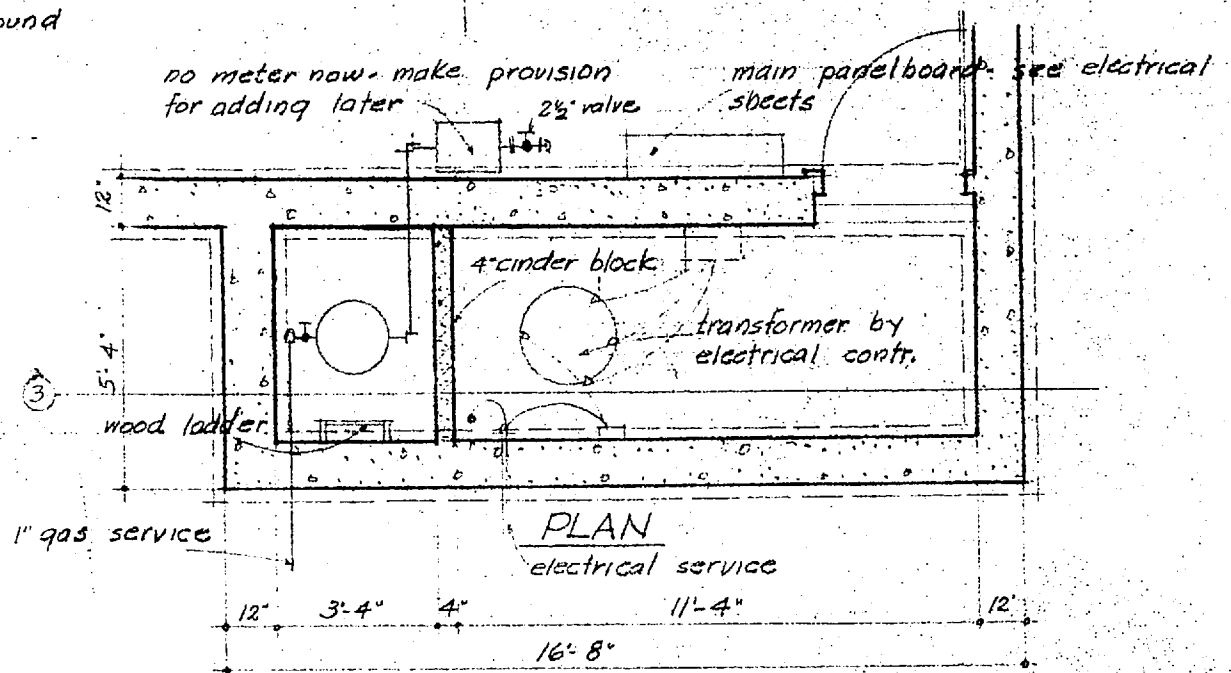
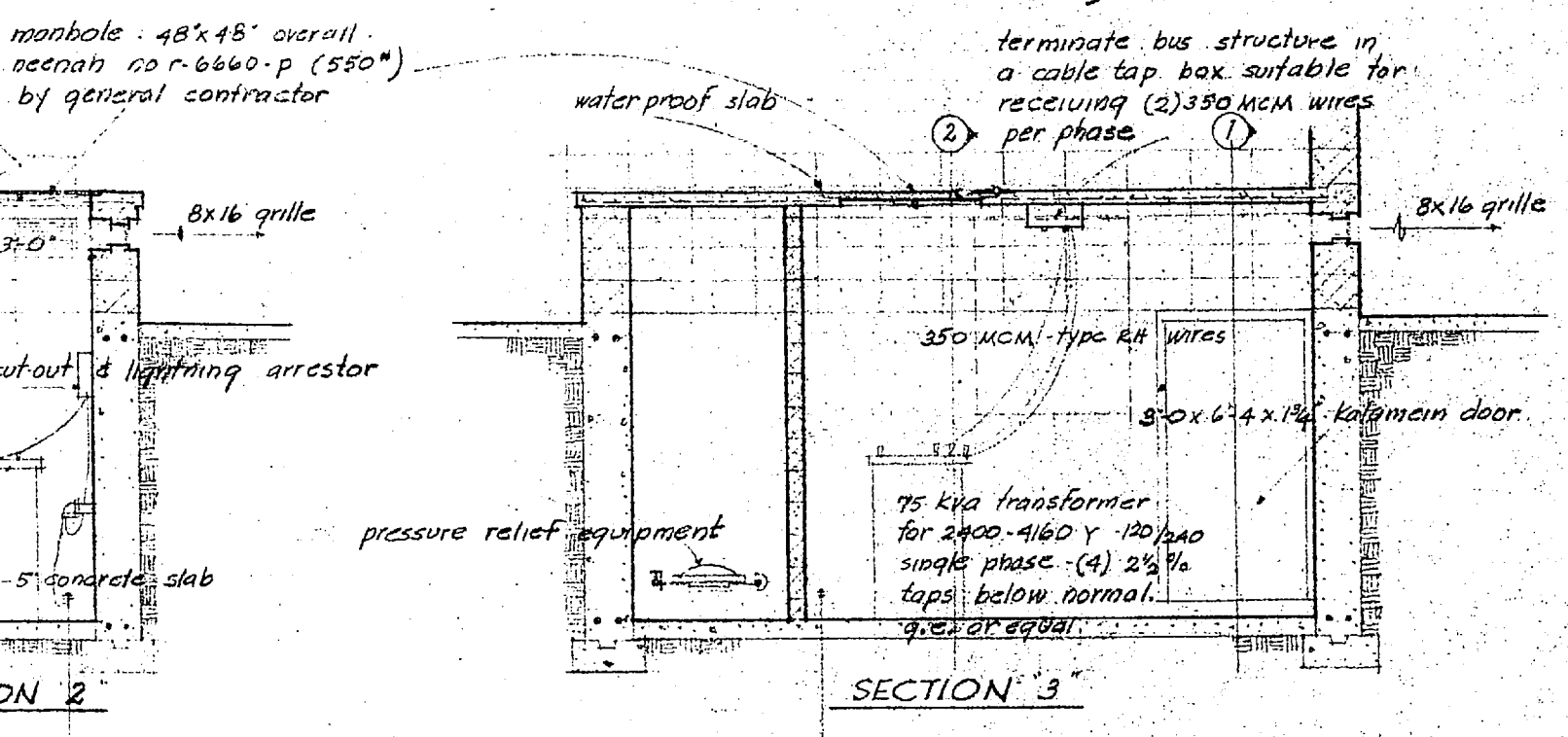
FOOTSCRAPER 3" = 1'-0"
(four required.)



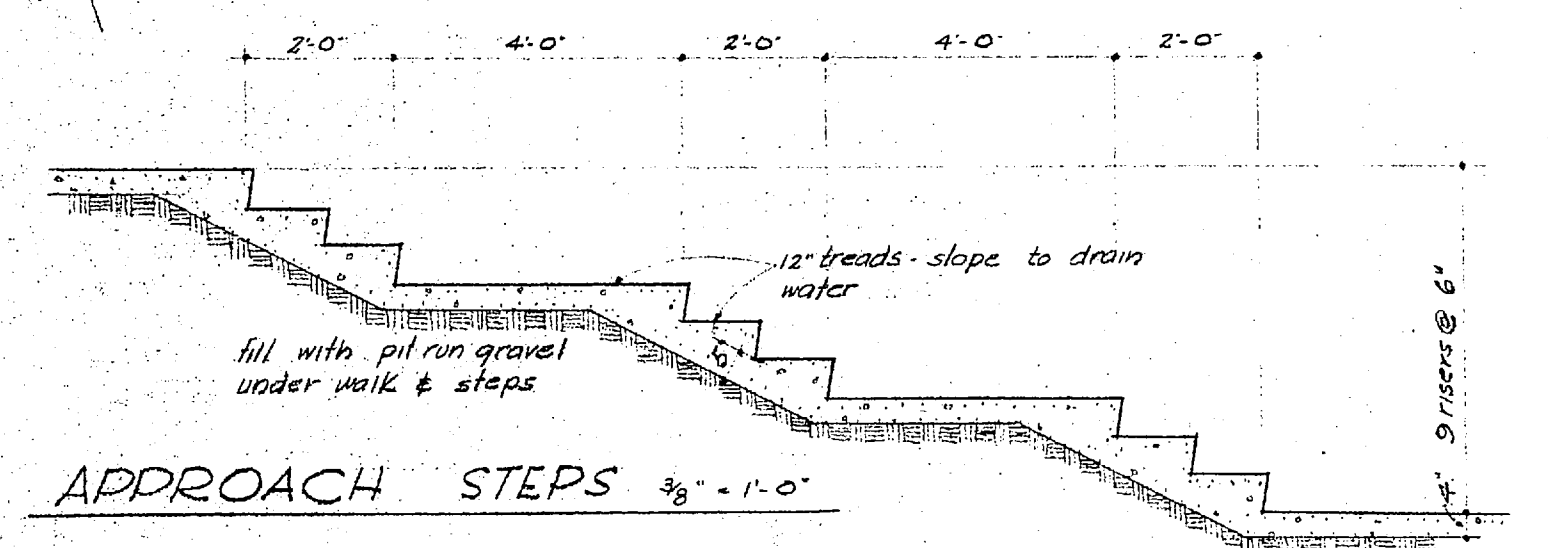
ADMINISTRATION BUILDING



TRANSFORMER VAULT 1/2" = 1'-0"



GIRL'S DORMITORY



APPROACH STEPS 3/8" = 1'-0"

YARD & SERVICE PLAN 1" = 20'-0"

| | | |
|--|--|--------|
| | A STUDENT UNION BUILDING | |
| | EASTERN MONTANA COLLEGE OF EDUCATION | |
| | BILLINGS, MONTANA | |
| | drawn LRS checked R.E.N. date APR 5 1954 job no. 1753 | Y I |